

COLUMBIA PRINTERS
12 Lambs Conduit Passage
Holborn, London, W.C.1

NEWS *and* VIEWS

OF WOODSIDE PARK

VOL VIII No 6
JULY . AUGUST
1963

Woodside Park

Ratepayers' and Residents' Association

Officers

Chairman :

H. M. Pike, 30, Lullington Garth HIL 4176

Vice-Chairman :

P. N. Campbell, 20, Pyecombe Corner HIL 4599

Treasurer :

N. W. Bradstreet, 8, Cissbury Ring South HIL 4765

Secretary :

L. A. Claydon, 90, Chanctonbury Way HIL 9578

Committee

Mrs. K. Armes, 14, Wolstonbury HIL 2214

W. W. G. Bond, 27, Lullington Garth HIL 8227

J. W. Corbett, 101, Cissbury Ring South HIL 7230

Miss D. E. Day, 11, Singleton Scarp HIL 3450

V. J. J. English, 7, Folkington Corner HIL 5507

A. G. Hare, 36, Lullington Garth HIL 7175

S. D. Holdershaw, 87, Cissbury Ring South HIL 2742

F. Kerr, 46, Cissbury Ring South HIL 6970

W. G. Manning, 36, Cissbury Ring North HIL 4776

Editorial Committee

H. M. Pike

P. N. Campbell

J. W. Corbett

L. A. Claydon

F. Kerr

Miss D. E. Day, *Advertisement Manager*

News and Views

OFFICIAL JOURNAL OF THE
WOODSIDE PARK RATEPAYERS' AND RESIDENTS'
ASSOCIATION

Volume VIII

No. 6

July-August, 1963

EDITORIAL

RESIDENTS may be wondering when repair work is going to be carried out on the uneven pavements on the estate. The severe frosts and prolonged snow of last winter caused considerable damage. The Hendon Council lost no time in assessing the extent of the damage and work started in various parts of the Borough just as soon as it was possible. In many cases, of course, the unevenness of the pavements was rectified simply by the disappearance of the cold weather but it is hoped that the bad patches on the estate will be attended to shortly.

Whilst discussing this and similar matters with the Council, the Committee has expressed its dissatisfaction with the lack of supervision given to general work carried out on grass verges and also the ever-increasing number of items of street furniture to be found at Sussex Ring. We have asked that attention be given to this and also that the general appearance of this, the entrance to Woodside Park, should receive more regular and concentrated attention. In Chanctonbury Way for example, the grass verges are cut quite regularly but never trimmed and the grass is some six inches over the pavement.

A recent Ministry of Transport directive to all Borough Councils has pointed out that the general state of street name-plates leaves much to be desired. In Woodside Park, the position is far from satisfactory and we have asked that such name plates should be erected, where missing, or re-erected in a position that can be seen by passing motorists and pedestrians alike. A classic example is at the Cissbury Ring junctions with Lullington Garth. At these points the visitor can be at a complete loss trying to find where he is.

Another point on which the visitor to Woodside Park can be assisted is in the accurate and correct positioning of house numbers. The outdated metal numbers affixed to front garden gates have in many cases fallen off, or else the gates have disappeared altogether. Local ironmongers have a large variety of house numbers in attractive displays which would help visitors and indeed the postman on his rounds.

THIS IS

Clarks

FOOTGAUGE

on which we fit

Clarks

CHILDREN'S SHOES

for length, width and girth

We also stock Clarks Ladies' Shoes

AS SHOWN ON T.V.

Finchley Shoe Stores

831, HIGH ROAD, NORTH FINCHLEY
HILL 3361

GOOD SHOE REPAIRS

Buses 125, 645 and 609 pass the door

PAINE'S OF TALLY HO

— E. H. PAINE LTD. —

FOR

MEN'S & BOYS' WEAR

at 341, Ballards Lane HIL 3945

GIRLS' WEAR

at 378, Ballards Lane, HIL 9243

School Outfitting a Speciality

Bus Route No. 125 passes both shops

Mr. Giles retires this term

by F. E. Baker

ALL who have been in any way connected with Frith Manor School will be sorry to learn that Mr. J. H. Giles is retiring from the position of Headmaster at the end of the summer term.

Mr. Giles opened the school in January 1939 with a staff of four teachers, two in the Infants and two in the Junior Department. In September of that year war broke out and in common with all other schools Frith Manor was closed. Mr. Giles quickly organised "Round the Houses Teaching" and with the co-operation of teachers and parents, groups of children were taught in private houses. Later the children attended Dollis School for mornings only but, after a few months, shelters were provided at Frith Manor and the school functioned more or less normally once again. As the number of pupils increased, two huts were added and classes were also accommodated in the school hall.

Mr. Giles is well known in Hendon having been President of the Hendon Head Teachers Association and President of the Hendon Teachers Association of the N.U.T. He has represented Hendon at several of the National Union of Teachers annual conferences.

In 1945 he called together the first meeting of the Frith Manor Parent-Teacher Association. Under his very able leadership this Association has proved an outstanding success and a vital link in the work of the school.

Mr. Giles has many friends among the parents and children of Woodside Park who we are sure would wish us to express their gratitude to him for the service he has rendered to the school over the past twenty-four years. We wish him and Mrs. Giles many years of health and happiness.

The school staff, in conjunction with the Committee of the Parent-Teacher Association are inviting contributions from any parents or scholars past or present who would like to be associated with a retirement gift to Mr. Giles. Donations addressed to Miss Price, Secretary of the Frith Manor Parent-Teacher Association, can be sent to the school or left at the private addresses of committee members or any member of the staff.

The presentation to Mr. Giles will be made on Tuesday, July 16th at the school at 8.15 p.m. The reception will commence at 7.30 p.m.

The British Red Cross Society

The recent house-to-house collection organised by Mrs. Kathleen Armes on behalf of the Hendon and Finchley Division of the British Red Cross Society realised the sum of £33 7s. 7d.

W. R. HARVEY & CO.

TOOLS

For all trades, workshop and garden.

CUTLERY

Table and desert knives etc. Scissors and pocket knives. All noted brands stocked.

IRONMONGERY

We carry large stocks for your selection. It pays to study quality.

Tally-Ho Corner, North Finchley, N.12

Telephones: HILLside 3454

HILLside 8714

UNION CHURCH

NORTHIAM, N.12

A WARM WELCOME

FOR ALL—Especially

BAPTISTS

CONGREGATIONALISTS

METHODISTS and

PRESBYTERIANS

Minister:

Rev. P. H. FIGGIS

50 Ventnor Drive, N.20 (HIL 1212)

Picture Frame Makers and Fine art Dealers

OIL PAINTINGS

Cleaned & Restored by Experts

RE-GILDING

ALL ARTISTS MATERIALS

H. WAINWRIGHT & SON LTD.

(Established 1902)

**712 HIGH ROAD
TALLY HO' CORNER
NORTH FINCHLEY, N.12**

Telephone: HILLSIDE 2804

Education in Borough 30

By Councillor T. C. Stewart

NO one can say categorically exactly what will happen and many residents will, undoubtedly, be apprehensive concerning any possible changes that may take place in the services and amenities of the present Hendon Borough when it becomes part of the new London Borough No. 30.

Perhaps I may be allowed to make some short reference to the Service of Education. To date the facilities offered within the Borough have always been of the highest order and in the best interests of the children concerned. Everyone connected, in any way, with Education in Hendon has tried to ensure that the following section of the 1944 Education Act be implemented to the full—"that Schools available in an area shall not be deemed to be sufficient unless they are sufficient in number, character and equipment to afford for all pupils opportunities for education securing such variety of instruction and training as may be desirable in view of their different ages, abilities and aptitudes, and for the different periods in which they may be expected to remain at school including practical instruction and training appropriate to their respective needs."

With the advent of Borough No. 30 there is not likely to be any material change in Education generally but there might well be a still wider range of schools for children. Whereas Hendon children have in the past gone to Hendon Schools—especially children in Woodside Park—now there is every probability that children in Woodside Park may be able to go to Finchley Schools.

In general there ought to be possible the means for greater interchange and choice between the Barnets, Finchley and Hendon Schools because all will be under one Educational Authority. With this greater flexibility the children will undoubtedly reap the benefit.

Whatever may happen the high quality of education already established will not be impaired.

Notice of Motion

Notice is given in accordance with the rules of the Association that the following addition to such rules will be proposed at the next Annual General Meeting:—

The Committee is empowered to elect Honorary Members in recognition of outstanding services rendered by such members to the Association. Such Honorary Members shall have the same voting powers as ordinary members so long as they are resident in Woodside Park.

"He who whispers down a well
About the goods he has to sell
Is not so apt to get the dollars
As he who climbs a tree and hollers!"

Davy Sprockett

We have a very large number of satisfied customers who do a great deal of hollering for us, but if we need more business, and who doesn't, then we must let people know of our wares and services in no uncertain manner!

● **STILL CAMERAS & PROJECTORS**

● **CINE CAMERAS & PROJECTORS**

● **INDUSTRIAL VISUAL AIDS**

● **STILL DIVISION**

● **FILM PRODUCTION**

● **FRESH FILM STOCK**

● **MOBIL FILM UNITS**

● **FILM LIBRARY**

● **TAPE RECORDERS**

● **CUTTING ROOMS**

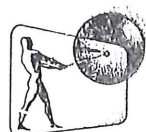
● **EQUIPMENT HIRE**

● **DEVELOPING**

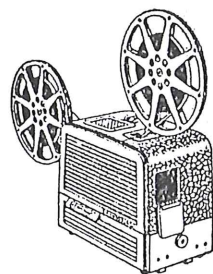
● **PRINTING**

● **REPAIRS**

● **THEATRE**



CINE &
PHOTOGRAPHIC
DIVISION
RANK PRECISION
INDUSTRIES LTD.



BELL & HOWELL
Sales & Service Agent

All C.M.P. staff have the training and knowledge to provide you with intelligent, commonsense advice and we shall be happy to demonstrate any equipment to you in your home, particularly those coloured holiday transparencies

COMMERCIAL MOTION PICTURES LIMITED

Photographic Sales with Service

VISION HOUSE · RUSSELL GARDENS · N.W.11

Telephone : SPE 9985

THE PEOPLE AROUND US

3. — The North Thames Gas Board contributed by the Public Relations Department.

ALTHOUGH the public's memory is reputedly short, it will undoubtedly be a very long time before recollections of the past winter are forgotten. Hardly a home hasn't got its own story of freeze-up, fuel shortage and burst pipes. Small wonder for, say the statisticians, the past winter was colder than for more than a century, with the ground at Kew frozen to a foot down.

Public utilities normally are rather taken for granted until there is a crisis, and this winter was certainly a crisis and a testing time for the suppliers of our heat and power. The North Thames Gas Board, which supplies gas and coke to some 5 million people over an area of more than 1,000 square miles, certainly had its problems. For most of its employees it called for flat-out effort for weeks on end—in most difficult and trying conditions. Not only for those engaged on the gas manufacturing side, but also those who work on the service side. New records of gas production were set up, only to be broken within a day or so, and then broken again.

On January 7th sales of gas in the North Thames area were up to 399 million cubic feet, creating a new daily record in place of the one that had stood since 1954. January 7th was a Monday, and when records are broken, it invariably seems to be a Monday, for people coming back to cold factories, shops and offices after a week-end naturally turn on every gas tap in sight.

But on Wednesday of the same week the record jumped another 6 million to 405 million cubic feet. On Thursday, the record went up by a further 7 million and the next day it went 3 million more to 415.1.

Yet still the heaviest demands were to come. As the cold and the snow and ice continued, many people running short of other forms of fuel, used their gas cookers as heaters, frequently leaving them on day and night. They used them too, to dry the washing it was impossible to hang in the open. And many cooked meals for neighbours who normally cooked by means other than gas.

So the demand for gas continued day after day at near-record levels, until having again reached 415.1 million cubic feet on January 16th it took another tremendous 13 million leap on the next day to 428.1 million. On January 21st up it went again—this time to the stupendous total of 430.3 million—a figure which now stands as the all-time daily record of gas sales in the North Thames area.

Now there arose a brief crisis period. Every bit of plant the Board could bring into action had been operating at maximum output for weeks and weeks without any chance of the necessary maintenance being given. And working flat out for weeks too had been the men who operate those plants, working—and travelling—for long hours,

Continued on page 8

The People Around Us — cont. from page 7

often in conditions of extreme difficulty caused by the iron-hard weather. Yet there seemed to be no foreseeable limit to the public's demand for gas to combat the continuing wintry conditions.

The Board had to announce—with the greatest reluctance after this month of such triumphant effort—that pressures would have to be reduced as a form of “rationing.” Yet, in fact, that period of “rationing” lasted only a few days, until the end of that week in fact. Then “back to normal” was announced, supplies were fully maintained and have been ever since. It was only during those few days that the Board's front was “dented,” and even then the vast majority of the Board's customers still had adequate supplies of gas.

This great winter emergency was met only by the most resolute and determined teamwork of everybody concerned. This article has necessarily laid special emphasis on gas output and supply, but there were many other “fronts” in the battle, calling for equally arduous and determined effort.

Just as every gasmaking station had its own stories of difficulties met and overcome, so did the Board's Distribution men who laid special emergency links and had their own special problems with frozen services and iron-hard grounds. So did the Board's coke and transport men, who in spite of appalling conditions, created their own record with a total of 65,000 tons of coke and coke products sold in one week; so did the men engaged on consumer service on the Board's Divisions, where control centres operating on a 24-hour basis were set up to deal with customer's problems.

As the Chairman of the Board, Mr. Michael Milne-Watson, said in a special Message of Thanks to the employees “. . . it has been no easy matter to keep these services going, and all the Board's employees have responded magnificently . . . there is every reason for us to be proud that more than 5 million people whom we serve are probably thinking ‘Thank Goodness for Gas’.”

Inaugural Meeting

Arrangements are now being made to hold an inaugural meeting this month to form a Borough 30 Federation of Ratepayers' Associations. Your Association will be represented and it is anticipated that the meeting will be held at the Hendon Town Hall.

W. G. DODGE & SON

**BUILDERS DECORATORS
PLUMBERS**

ROOF SLATERS AND TILERS

**22 Shaftesbury Avenue & 12 Lancaster Road
NEW BARNET, Herts.**

Estimates Free

Barnet 4238

W. & R. HORSTEAD

(A.M.I.B.E.)

National Registered Contractors (By Exam.)

**REWIRING
ADDITIONAL POINTS
APPLIANCE SUPPLIES AND
REPAIRS**

Approved Agents for
Hoover, Electrolux, G.E.C., Morphy
Richards, etc.

**Immersion Heaters installed from
£12 complete**

Estimates and Plans Free

Established since 1933 Personal Attention

Points fitted free on major appliances
sold

Repairs collected and delivered

**5 HENDON LANE, FINCHLEY N.3
FINchley 4539**

TYPEWRITERS

•
**OUR VAST SELECTION
IS WELL WORTH
YOUR INSPECTION**

•
**New and Secondhand
Easy Terms on all Makes**

**HIRES : : REPAIRS
PART-EXCHANGES**

**BUSINESS AIDS CENTRE
134 Ballards Lane, Finchley, N.3
FINCHLEY 7195**

Safety in the Home — Part 2

IN a recent issue, you were reminded how accidents can so easily happen in the home, but as in most things, prevention is better than cure. Careful planning can help to eliminate many of the commonest causes of accidents, firstly by securing a good layout of your home and secondly by planning your daily work.

Let's start with the kitchen, for unless you have recently re-planned it, it is unlikely that the small space available is being used to the fullest effect. Have enough working surfaces on which to put things down, particularly hot objects. If possible the cooker should be next to a worktop. The equipment should be arranged in a tidy L-shape, with the other side of the kitchen free to allow easy access and room for the kitchen table and chairs. A half door into the hall will help you to keep the floor free of children's toys. Sliding doors are useful on kitchen cabinets, as you will not hit your head. Door handles of the lever type should be avoided as they catch on your sleeve or pockets. The best height for door handles is 3 ft. 7 ins. to 4 ft. 2 ins. It has been a tradition to have the kitchen sink at 2 ft. 10 ins. from the floor, but it is often more comfortable to wash up at a sink set at 3 ft. or 3 ft 3 ins. Similarly your ironing board should be fixed at a suitable height.

The stairs can be another source of trouble. Make sure that your stair carpet is firmly fixed, especially if you have young children. Good lighting on the stairs is vital. In fact, good lighting all over your house is not only safer, it is more cheerful. A 75 watt or even a 100 watt lamp makes a 60 watt look very dim by comparison and for most purposes, is far less strain on the eyes.

Remember that you can easily damage yourself, e.g. slipped disc, by moving furniture and other heavy objects. It is really better to get some help.

When in the garden remember that forks and rakes should be placed prongs downwards and do not cut through the cable of your electric hedge cutter or rotary electric mower. If your garage has a corrugated asbestos roof, remember that asbestos becomes more and more brittle with age. It would be extremely dangerous to walk or stand on it without putting a very substantial board or ladder across it. The recent heavy snow has weakened the fixings of many gutters and they could easily kill someone should they fall. Some gutter brackets will be thin due to the rusting of years and should be renewed with repair brackets. Black plastic gutters weigh much less than cast-iron and do not require any painting. Be careful, too, with the ladder. See that all the rungs are sound. If you buy a new one, give it two coats of marine varnish to preserve it. Remember that the soil is soft and if you are going to use a double extension ladder stand the bottom of the ladder on a board so that it will not slip off and if you are going to work at a particular point for some

Continued on page 14

RADIO : TELEVISION

RENT — SALES — SERVICE

Radio & ELECTRICAL EQUIPMENT Renters Ltd.

822, HIGH ROAD, N.12 HIL 3696

84 HIGHGATE HIGH STREET, N.6. MOU 7183

Leading Agents for :

BUSH : PYE : MURPHY : PHILIPS : ALBA

Day Nursery

GORDON HALL,
HUNTLEY DRIVE,
NETHER STREET.

Adjoining WEST FINCHLEY
TUBE STN.

2 to 5 YEAR OLDS

M.C.C. LICENSED

Enquiries to :

HIL 8907

HIL 9547

after 4.0 p.m.



TEL HILLSIDE 5587



Ladies Hair Stylists



LOUIS CROOK
4 GRAND ARCADE
FINCHLEY, N.12

D. C. JEFFERY

Electrical Engineer

and

Contractor

47 HUTTON GROVE

FINCHLEY, N.12

Telephone : HILLside 7312

FINCHLEY

COACHES

Phone HILLSIDE 5251
or HILLSIDE 9830

LUXURY TRAVEL

FOR

ALL OCCASIONS

661, High Road, N.12

Buy your Lawn Mower from the appointed sales and
service agent and obtain the benefit of service after purchase.

Hire Purchase and part exchange facilities.

THE

B. & S. LAWN MOWER CO.

SALES — SERVICE — SPARES

QUALCAST, SUFFOLK, SHAY, ROTOSCYTHE

WEBB, ATCO & RANSOMES LAWN MOWERS

ROTOGARDENER and GARDENMASTER CULTIVATORS

WOLSELEY MERRYTILLERS - TARPEN EQUIPMENT

Showroom - 656 HIGH ROAD,

NORTH FINCHLEY, LONDON N.12

Telephone : HILLside 4773

Sunday Opening of Chemists

The following Chemists are open EACH WEEK-DAY (including
EARLY CLOSING DAYS) from 6 p.m. to 7 p.m. and on SUNDAYS
and PUBLIC HOLIDAYS from 12 noon to 1 p.m.

JULY

1st - 7th Boots Cash Chemists, 788 High Road, N.12.

8th - 14th H. G. Brockhurst Ltd., 787 High Road, N.12.

15th - 21st Olins Chemists Ltd., 321 Ballards Lane, N.12.

22nd - 28th A. Leiter, 601 High Road, N.12.

July 29th -
August 4th C. W. Leaversuch, 73 Woodhouse Road, N.12.

AUGUST

5th - 11th London Co-op Chemists, 845 High Road, N.12.

12th - 18th R. H. Nind, 808 High Road, N.12.

19th - 25th Timothy Whites and Taylors, 730 High Road, N.12.

In addition the following branches of Boots Cash Chemists are
open as follows :—

60-62 Kilburn High Road, N.W.6 (Daily to 9 p.m.).

Aldgate High Street, E.C.3 (Daily 8 a.m. - 11 p.m. including
Sundays and all Bank and Public Holidays).

whilst the Chemists listed below are open both day and night in
Central London :—

Boots Cash Chemists, Piccadilly, W.1.

John Bell and Croyden, 50 Wigmore Street, W.1.

THE ARCADE JEWELLERS

Finchley's leading Jewellers

Agents for :

Omega

Rolex, Jaeger - Le Coultre,

Longines, Roamer and

Accurist Watches

Exceptional value in Engagement and
Wedding Rings

We Specialize in Gifts for ALL Occasions
Call and See Our Wide Variety of New
Gifts

Painless Ear Piercing

THE

ARCADE JEWELLERS

**7-8-9 GRAND ARCADE
NORTH FINCHLEY, N.2**

Tel. : HIL 3735

BUSSELL & Son Ltd.

Funeral Directors

6 WOODHOUSE ROAD

North Finchley, N.12

HILLSIDE 1651

623 HIGH ROAD

North Finchley, N.12

HILLside 1651

123 HIGH ROAD,

East Finchley, N.2

TUDor 1812

Funerals conducted to and
from all parts

Private Chapel of rest

Safety in the Home — cont. from page 10

time, it is as well to hammer two large nails into the fascia at eaves level and tie the ladder to these. Repairing tiles or repointing your boiler chimney stack is best left to a reputable builder. Do not employ any Tom, Dick or Harry who comes round touting for work because in the long run it will not be cheaper for you.

Although this is an article on home safety, it might not be out of place to suggest that you look at your boiler chimney from time to time, particularly if it shows signs of leaning. You do not want any loose bricks or mortar to fall. Modern solid fuel and gas boilers are more efficient than they used to be and so less heat escapes up the chimney. The flue is, therefore, cold, and if you put a lot of wet garbage on the boiler, the water will condense on the inside of the flue walls. This condensate contains sulphur which attacks the cement in the mortar. When the houses were built, the boiler flue was lined with weak lime or cement, whereas with a modern boiler a lining should be used. This consists of pipes about 12 ins. long which form a flue inside the brickwork, thus protecting it from sulphate attack. A cheaper alternative is to have the leaning part of the stack rebuilt with a sulphate-resisting cement mortar.

All gas or electric fires sold today must be fitted with a British Standard fire-guard. These should also be fitted to older fires. The local electricity or gas showrooms will advise you. Make sure, too, that you are buying heating apparatus that is marked with the seal of the British Electrical Approvals Board or the Gas Council Approvals mark. Oil Heaters should be similarly marked with the British Standard Kite-mark. Make sure your electric plugs or sockets are not damaged, particularly if they are on the skirting where the Hoover or chair legs can hit them. Do not extend electric wiring yourself unless you know exactly what you are doing.

Care should be taken to ensure that if polystyrene ceiling tiles are used they should be self-extinguishing. One final word. After our heater in the loft!

ANNUAL GENERAL MEETING

THE ANNUAL GENERAL MEETING OF THE

ASSOCIATION WILL BE HELD AT 8 P.M. ON

FRIDAY 20th SEPTEMBER AT FRITH MANOR SCHOOL

AGENDA AND FULL DETAILS IN THE NEXT ISSUE

North London's Leading Store for FASHIONS and FURNISHINGS

Have you visited our Tea and Coffee Lounge?

*We invite you to look round our new and
EXTENDED DEPARTMENTS*



TELEPHONE

HILLside 3366

TALLY HO, NORTH FINCHLEY, N.12.

SELLING or BUYING a HOUSE?

Consult Your Local Estate Agent on All Property Matters

BUYERS ALWAYS WAITING

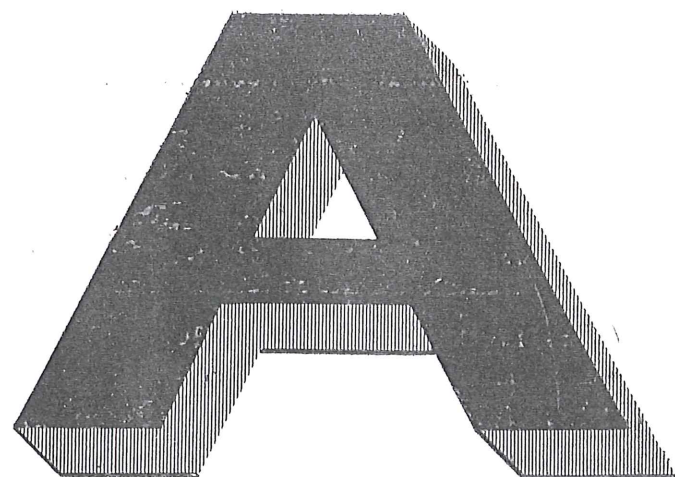
All Classes of Mortgage and Insurance Business Effected

BENNETT & HALL

Incorporated Auctioneers—Estate Agents—Surveyors & Valuers

14a SUSSEX RING,
WOODSIDE PARK,
FINCHLEY, N.12
phone HIL 6387 (3 lines)

5 LONG LANE, CHURCH
END, FINCHLEY, N.3
phone FIN 2208 (3 lines)



ANGLIA

What's the Ford of your choice? The distinguished Anglia Super? The Small car with the Big Difference — Cortina? The new 1500 c.c. Classic? The Mark III Zephyr 4, Zephyr 6, or the wonderful Zodiac, all of them luxury cars at very reasonable prices?

From Anglias to Zodiacs, we have all the Ford range including Estate Cars.

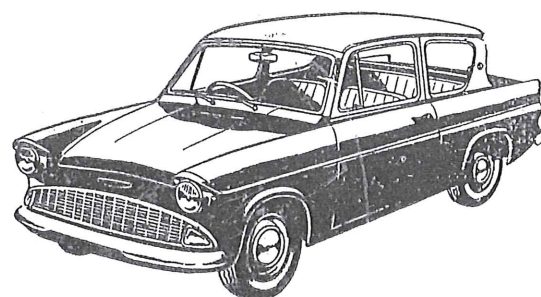
Call in at our showrooms and see for yourself! The address is:

PERRY'S OF FINCHLEY

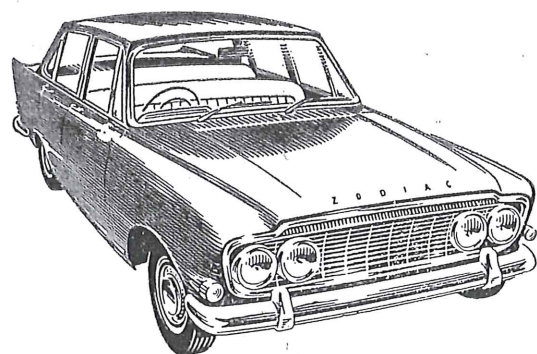
Main Ford Dealers,

**271-279 Ballards Lane, Nr. Tally Ho
N. Finchley, N.12 HIL. 8888**

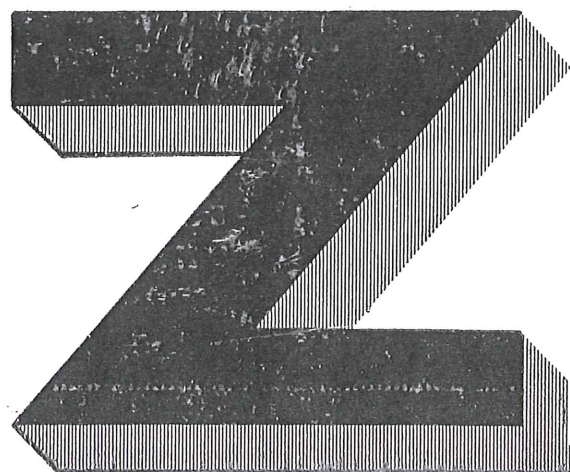
Open Mon - Sat 8 a.m.-8 p.m. Sunday
for inspection only 10 a.m. - 1 p.m.



MAIN  DEALER



ZODIAC



USEFUL TELEPHONE NUMBERS AND ADDRESSES

Fire and emergency calls	999
Police Station, Ballards Lane, N.3.	FIN	1113
Finchley Memorial Hospital	FIN	1195
Barnet General Hospital	BAR	7421
Local Chemist	HIL	3815
Cinemas: Gaumont, North Finchley	HIL	3377
Gaumont, Hendon	HEN	7137
A.B.C., Golders Green	SPE	6161
Odeon, North Finchley	HIL	1698
Odeon, The Quadrant	SUN	3538
Odeon, Temple Fortune	SPE	9741
Rex, East Finchley	TUD	2233
Golders Green Hippodrome	SPE	0022
Colne Valley Water Co., Watford	WA.2	3333
Eastern Electricity Board, Brent Street, N.W.4	SUN	0111
North Thames Gas Board, N.3	FIN	2600
Hendon Library	HEN	8282 Ext. 155
Home Helps — Area Health Office, Town Hall, N.W.4	HEN	8282
Ministry of Labour & National Service, 316a Regent's Park Road, N.3	FIN	6216
Ministry of Pensions & National Insurance, 10 Finchley Lane, N.W.4	SUN	0091
National Assistance Board, 10 Finchley Lane, N.W.4	SUN	0091
H.M. Inspector of Taxes, Grand Arcade, N.12	HIL	6651
Motor Registration & Licensing, 84 Uxbridge Road, W.13	EAL	7755
Div. Inspector of Weights and Measures	STA	3027
P.D.S.A., 640 High Road, N.12	HIL	8093
R.S.P.C.A. (Inspector), 101 Cumbrian Gardens, N.W.2	SPE	1412