
NEWS AND VIEWS OF WOODSIDE PARK

PRINTED BY COLUMBIA PRINTERS
12 LAMBS CONDUIT PASSAGE
HOLBORN LONDON, W.C.1



Vol, VI No. 5

May/June 1961

Woodside Park Ratepayers' and Residents' Association

OFFICERS AND COMMITTEE OF THE ASSOCIATION

Chairman :

E. W. Soldan, 85, Cissbury Ring South HIL. 3846

Vice-Chairman :

H. M. Pike, 30, Lullington Garth HIL. 4176

Treasurer :

W. Robinson, 1, Wolstonbury HIL. 4533

Secretary :

M. J. Mann, 80, Linkside FIN. 0787

COMMITTEE

Mrs. K. Armes, 14, Wolstonbury HIL. 2214

W. W. G. Bond, 27, Lullington Garth HIL. 8227

P. N. Campbell, 20, Pyecombe Corner HIL. 4599

J. W. Corbett, 101, Cissbury Ring South HIL. 7230

V. J. J. English, 7, Folkington Corner HIL. 5507

P. A. Long, 39, Linkside FIN. 7311

W. G. Manning, 36, Cissbury Ring North HIL. 4776

A. Purdon, 60, Cissbury Ring South HIL. 7181

Mrs. A. B. Rowe, 32, Chanctonbury Way

A. West-Jones, 11, Rodmell Slope HIL. 6592

EDITORIAL COMMITTEE

E. W. Soldan H. M. Pike J. W. Corbett
 W. W. G. Bond

NEWS and VIEWS

Official Magazine of the
Woodside Park Ratepayers' & Residents' Association

Volume VI, No.5

May-June 1961

NO PYLONS ON THE SKYLINE

After nine months of waiting, it was with relief that we read in April, in the national and local newspapers, of the result of the four-day Inquiry which took place at the Town Hall last July.

Although Pylons are to be allowed from the Elstree Sub-Station to a point near Scratch Wood Railway Tunnel, on the route proposed by the Central Electricity Generating Board, the exact placing of these 120 ft. high towers is to be done in consultation with a landscape consultant, and certain towers will also be the subject of further discussion with the local authorities concerned.

Eastwards of Scratch Wood, however, the line will have to go underground, and the Mote Mount Golf Course, Highwood Hill, and the Folly Brook Valley are thus saved from an eyesore which would have spoiled a large part of the countryside which is so dear to us.

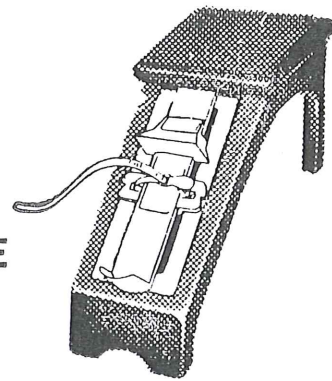
The result is that, of the forty towers which it was proposed to erect, only twenty are to be permitted.

Although a large part of the evidence at the Enquiry came from the various local authorities, we feel sure that it was the backing of our own and many similar organisations in the area, evidenced by the large numbers present, which influenced the Minister in his findings and led to the success of this Appeal. For this victory for organised public opinion we are deeply grateful to those members of our Committee who gave so freely of their valuable time in order to be present and give evidence.

If we are to retain the privileges which are ours, it can only be by continued vigilance on the part of our Association, and in this your Committee need the support and backing of every Member in their efforts on your behalf.

THIS IS

Clarks
FOOTGAUGE



on which we fit

Clarks CHILDREN'S SHOES
for length, width and girth

We also stock Clarks Ladies' Shoes

AS SHOWN ON T.V.

Finchley Shoe Stores

831, HIGH ROAD, NORTH FINCHLEY
HILL 3361

GOOD SHOE REPAIRS

Buses 125, 645 and 609 pass the door

E. H. PAINE LTD.

TALLY HO! CORNER, NORTH FINCHLEY

FOR

MEN'S & BOYS' WEAR

at 341, Ballards Lane HIL 3945

GIRLS' WEAR

at 378, Ballards Lane, HIL 9243

School Outfitting a Speciality

Bus Route No. 125 passes both shops

The Hendon Library Service—1

by

K. C. HARRISON, M.B.E., F.L.A.

(Borough Librarian)

As space is limited, I am not going to dwell upon the past development and achievements of the Hendon Library Service. Readers who are interested in these aspects can get information on them from the Annual Report which is published by the Council about September of each year. Copies of the Report for 1959-60 are still available on request from any of the libraries in the Borough, including the Travelling Libraries.

Instead, I want to take this opportunity to tell residents about some of the developments which are planned for the future. During 1961 a fine new branch library will be opened in Hale Lane, Edgware and this should be able to give an adequate service to readers in that area for many years to come. The building will match the Mill Hill Branch Library in size, and it will have many contemporary features. Opening of this new Edgware Library is expected in September or October this year.

The southern part of the Borough, which up to now has been served by the Golders Green Branch and by the Travelling Libraries, is to have an additional Branch Library which will serve the Childs Hill area. The Council purchased the All Saints' Church Institute for this purpose, and conversion works are soon to start on this excellent site. The provision of this additional branch, which will house about 16,000 volumes for adults and children, should ease the pressure on Golders Green Branch, up to now one of the busiest branch libraries in the whole country.

When the Childs Hill library is opened, perhaps in January of 1962, it will be possible to re-route the Travelling Libraries. The two mobile libraries owned by the Council between them serve 13 separate sites every week. Of these sites, Woodside Park is the busiest and the Childs Hill area has been the second busiest. It is too soon yet to say what new arrangements will be made, but the Woodside Park area will probably benefit by having more frequent visits from the Travelling Library.

I should like to make it clear that the Travelling Libraries are organised as a separate branch. They have their own book stock of over 23,000 volumes, which means that frequent changes are made in the contents of the mobile libraries, giving readers a wide range of selection. Mr. A. J. Gilbert, A.L.A., is the librarian of the Travelling Libraries, and he and his staff are always willing to take book reservations and requests from readers, and to provide any other information they can.

Mention should also be made of our indefatigable driver, Mr. Alf Kirby, who gets the Travelling Libraries on site in spite of the difficulties sometimes caused by fog, snow and ice, to say nothing of parked cars which sometimes obstruct our sites. We sometimes have to ask for the co-operation of residents in this respect but, as far as Woodside Park is concerned, we rarely ask in vain.

W. R. HARVEY & CO.

TOOLS

For all trades, workshop and garden.

CUTLERY

Table and desert knives etc. Scissors and pocket knives. All noted brands stocked.

IRONMONGERY

We carry large stocks for your selection. It pays to study quality.

Tally-Ho Corner, North Finchley, N.12

Telephones : HILLside 3454
HILLside 8714

THAMES VALLEY

SCHOOL OF MOTORING

R.A.C. Registered
Instructors M.S.A.
Appointed School

303 Ballards Lane, N.12

(50 yards from Tally-Ho
Corner - Below "Celia's"
Ladies Hairdressers)

HIL 9509

Picture Frame Makers and Fine art Dealers

OIL PAINTINGS
Cleaned & Restored by Experts
RE-GILDING
ALL ARTISTS MATERIALS

H. WAINWRIGHT & SON LTD.

(Established 1902)

**712 HIGH ROAD
TALLY HO' CORNER
NORTH FINCHLEY, N.12**

Telephone : HILLSIDE 2804

NOISE ABATEMENT

The editorial committee has been reading QUIET PLEASE, the official journal of the Noise Abatement Society and was impressed at the rapid growth of members since the Society's inception last year. There are listed hundreds of member local authorities throughout the country and scores of member societies and associations representing ratepayers, health authorities, townswomen's guilds, schools, chambers of commerce, to name just a few. Readers will recall that we became members soon after the formation of the Society.

In the past year a tremendous amount of work has been undertaken by the Society which has resulted in many thousands of column inches in the press and periodicals. Noise tests have been made on vehicles, domestic appliances, building materials, and a whole television programme was devoted to the abatement of noise.

Undoubtedly the most important achievement has been the Noise Abatement Bill which became law on 27th November last. Under Section 1, local authorities have the power to serve an abatement notice on the persons causing the nuisance or on the owner of premises from which it arises. Section 2 prohibits the use of loud-speakers in the streets between 9 p.m. and 8 a.m. and ice-cream chimes before 12 noon and after 7 p.m. If notices served under the Act are not complied with they can be enforced by proceedings in a court.

The Noise Abatement Act 1960 is now law. It is up to sufferers --remember this Association is a member--to use it to the fullest advantage.

It is worth recalling the purpose of the Noise Abatement Society and part of its long term policy:

"To eliminate all excessive and unnecessary noise from all sources."

"Teaching at all levels in Schools, National Press, Radio and Television, that noise is ugly, wasteful, unintelligent and unnecessary, and that perpetrators cause suffering and damage to themselves and others."

Spreading The Word

The Hendon & Finchley Times inaugurated in a recent issue a new feature devoted to the news of ratepayers associations. This association is grateful to the Editor for giving the space which on this occasion featured the traffic problem of Lullington Garth. In fact, the other associations contributing from Hendon and Mill Hill also had a lot to say about traffic and highways in general.

All the ratepayers associations contributing are affiliated to the Conference of Ratepayers Associations of Hendon which was instrumental in devising this new feature.

THE TORRINGTON ARMS

WHITBREAD BEERS

HIGH ROAD - NORTH FINCHLEY

Prop. A. W. Bartlett

HIL. 2419

A first class luncheon served at reasonable price

Monday to Saturday

Snacks always available

Musical entertainment Friday to Sunday

Lounge Bar available for hire on Mondays, Wednesdays,
and Thursdays for your Private parties

D. C. JEFFERY

Electrical Engineer

and

Contractor

47 HUTTON GROVE

FINCHLEY, N.12

Telephone : HILlside 7312

FINCHLEY

COACHES

Phone HILLSIDE 5251

LUXURY TRAVEL

FOR

ALL OCCASIONS

661, High Road, N.12

Traffic In Lullington Garth

Once again the traffic in Lullington Garth is in the news. We are now getting accustomed to the ever-increasing volume of traffic by day but whether the same can be said about having our sleep broken at the dead of night by heavy vehicles is debatable. During recent weeks, residents have reported to the Association that their sleep is being disturbed by the exceptional noise that is being made by Army postal vehicles whilst travelling along Lullington Garth between midnight and 5.0 a.m.

We have complained about this to the Army postal authorities, Mill Hill, and in their reply they point out that as a military unit they use the standard vehicle issued to the Forces, and that this type of vehicle is possibly not the best suited for normal day to day use in and around a large residential area. They state that they are trying to obtain a type of vehicle more in keeping with their needs but whether they will be successful they cannot say at the moment. In the meantime, however, we have been told that an order has been issued requesting the co-operation of all drivers by avoiding any impression of excessive speed, revving of engines or unnecessary gear changing in Lullington Garth.

Whilst there has been some improvement since our complaint, the position is not entirely satisfactory. The case is under constant review and will be re-opened with the Army authorities if further complaints are received.

Letters From Residents

The following letter has been received from St. Barnabas Church. On page 10 you will find a letter referring to the Young Zionists.

We publish both of these letters, but for obvious reasons we cannot comment.

22 Lullington Garth,
Woodside Park, N.12
28th April, 1961

Dear Mr. Soldan,

I would be pleased if you could find room to publish this letter which is an appeal for St. Barnabas Church Gift Day.

The annual gift day will be held on Saturday, June 17th, 1961. The target this year will be £500 and is required for various repairs and replacements, and the council look forward to a generous response to this appeal.

The Vicar will be in his usual seat of custom at Sussex Ring from 9.30 a.m. to 5.30 p.m. to receive gifts on the above date.

Yours sincerely,

T. DUDLEY PIERCE

Subscribers Trunk Dialling in the London Area

Residents with relatives, friends or business acquaintances in Watford will probably know that the telephone exchange there has been converted to Subscriber Trunk Dialling (S.T.D.), and that with this system subscribers there no longer need the assistance of an operator to obtain their trunk calls as they can dial them themselves. These calls are also much cheaper as the basis of charging is different. Instead of a minimum charge of three minutes, the charge is for the actual time spent, and can be as low as twopence if the call lasts for only a few seconds. This sounds attractive, but with the introduction of S.T.D. the Post Office has also introduced local call timing, and it is this facility which some residents view with apprehension, due possibly to letters and articles which have appeared in a number of National newspapers which seem to lay more emphasis on the debit side of S.T.D. than on the credit side.

To find out more about this system we have written to the Post Office and the following covers the salient points of the reply which we received.

At the present time, any exchange in the country which does not yet "enjoy" S.T.D. facilities has untimed local-fee calls. Hillside and Finchley are examples and, as you know, any call within the local-fee areas of these exchanges costs 2½d. irrespective of whether it lasts for a few seconds or a few hours. With S.T.D., however, these calls will be timed and will cost 2d. if of three minutes' duration or less, 4d. if up to six minutes, and so on. In the evening period, that is between 6 p.m. and 6 a.m., when the telephone traffic is light, the time allowance is doubled and 2d. will be the charge for six minutes, 4d. for twelve minutes, and so on. There are also comparable reductions in the cheap rate Trunk services.

Those that have fears that there will be a phenomenal increase in their telephone bills will be relieved to know that this is unlikely to be the case. The decision to time local calls was not made speculatively but was made only after considerable research on call durations. In the Greater London Area it was found that two-thirds of all calls lasted less than three minutes and 70% less than four minutes, and from these statistics it seems likely that the new process of charging will not materially affect people's telephone bills, and this has been proved by experience where this timing has been introduced. In Bristol and other places where timing has become operative, it is reported that the general consensus of opinion is one of approval. It is also reported that where S.T.D. has been introduced there has been a very considerable increase in local and trunk traffic which proves that not only is the system popular but it encourages people to make more calls.

continued on page 10

Choice Flowers for all Occasions—

T. Simmons & Son

Florists :: Nurserymen

John Innes Potting Compost, Fertilizers
and Horticultural Sundries



95 Ballards Lane, Finchley, N.3

Nursery at 166 Nether Street, N.3

Telephone FINCHLEY 2245

TYPEWRITERS

OUR VAST SELECTION IS WELL WORTH
YOUR INSPECTION



New and Second-Hand Easy Terms on all Makes

HIRES — REPAIRS — PART-EXCHANGES

BUSINESS AIDS CENTRE

134 BALLARDS LANE, FINCHLEY, N.3

FINCHLEY 7195

continued from page 8

As you may have read in your national newspapers a few weeks ago, S.T.D. is coming to London in July of this year, but only to a few exchanges in the City and Centre Areas. Hillside and Finchley exchanges are not scheduled for conversion until 1963 and 1965 respectively, but the Post Office state that in view of the considerable amount of work involved in the introduction of S.T.D., it may not be possible to meet these dates.

It is hoped that this information will assure residents that S.T.D. will be beneficial to the generality of the public and, if the present increase of traffic continues, it cannot but help to reduce the cost of telephoning ultimately.

32 Cissbury Ring South,
Woodside Park, N.12
HIL 1010

19th March, 1961

Dear Mr. Soldan,

I am writing to you on behalf of the Federation of Zionist Youth (F.Z.Y.), and I should be very grateful if you would print this letter, or some of it, in the next issue of the Woodside Park Ratepayers Magazine.

F.Z.Y. caters for youth between the ages of 17 and 25, who are interested in Israel and their Jewish Heritage.

The Golders Green Society meets every Wednesday at different members' houses in the Finchley, Hendon and Golders Green areas, and our programmes range from evenings where speakers are invited to talk on a variety of subjects, not only of a Jewish or Zionist nature—to evenings where the members themselves participate in the programme.

Apart from our weekly meetings we have many inter-functions on the weekends, such as parties and dances, with other societies from all over Greater London, and each year we have a Summer School, with participants from all over the British Isles.

Anyone interested in further details should contact me at the above address.

Thank you very much for your help and co-operation in this matter.

Yours sincerely,

NORMA SHERBOURNE.

RADIO : TELEVISION

RENT — SALES — SERVICE

Radio & ELECTRICAL EQUIPMENT Renters Ltd.

822, HIGH ROAD, N.12

HIL 3696

Leading Agents for :

BUSH : PYE : H.M.V. . PHILLIPS G.E.C.

For all your
**Travel
Arrangements**

CONSULT

FRAMES' TOURS

827 HIGH ROAD, N.12

Tel. HILside 5022/3



*For Modern Hairstyling and
the Newest Permanent
Waving methods including
JAMAL, EUGENE,
CLYNOL, etc.*

CONSULT

Celia

1st FLOOR

303 Ballards Lane, N.12

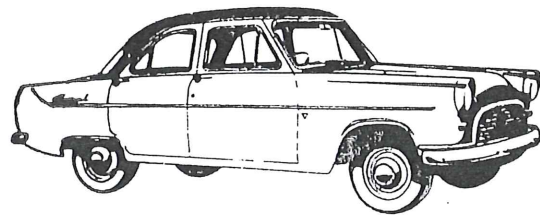
Telephone HILside 7334

Sunday Opening of Chemists

The following chemists are open EACH WEEKDAY (including EARLY CLOSING DAYS) from 6 p.m. to 7 p.m., and on SUNDAYS AND PUBLIC HOLIDAYS from 12 noon to 1 p.m.:---

May 8th to 14th Boots Cash Chemist, 788 High Road, N.12
 „ 15th „ 21st J. H. Spencer, 839 High Road, N.12
 „ 22nd „ 28th H. G. Brockhurst Ltd., 787 High Road, N.12
 „ 29th „ 4th June John Harley Ltd., 321 Ballards Lane, N.12
 June 5th „ 11th E. J. Haylock 601 High Road, N.12
 „ 12th „ 18th C. W. Leaversuch, 73 Woodhouse Road, N.12
 „ 19th „ 25th London Co-Operative Chemists, 846 High Road, N.12
 „ 26th „ 2nd July R. H. Nind, 808 High Road, N.12
 July 3rd „ 9th Timothy Whites & Taylors, 730 High Road, N.12

Torrington Car Hire Service



Weddings - Masonic Dances
 Holiday Trips - London Stations

● WE ARE OPEN 24 HOURS PER DAY

14 TORRINGTON PARK,
 North Finchley — London, N.12
 Prop. J. J. NEWMAN Tel. Hillside 9266

Buy your Lawn Mower from the appointed sales and service agent and obtain the benefit of service after purchase.

Hire Purchase and part exchange facilities.

THE B. & S. LAWN MOWER CO. SALES — SERVICE — SPARES

Appointed Sales and Service Agents for
 QUALCAST, SUFFOLK, SHAY, ROTOSCYTHE
 WEBB & GREENS LAWN MOWERS,
 ROTOGARDENER and GARDENMASTER CULTIVATORS

**Showroom - 656 HIGH ROAD,
 NORTH FINCHLEY, LONDON N.12**
 Telephone : HILLside 4773

— WE COLLECT AND DELIVER —

Works : CHURCHFIELD WAY N.12 (at rear of showroom)

THE ARCADE JEWELLERS Finchley's leading Jewellers

Agents for :

Omega

Rolex, Jaeger - Le Coultre,

Longines, Roamer and

Accurist Watches

*Exceptional value in Engagement and
 Wedding Rings*

*We Specialize in Gifts for ALL Occasions
 Call and See Our Wide Variety of New
 Gifts*

Painless Ear Piercing

THE
ARCADE JEWELLERS
 8-9 GRAND ARCADE
 NORTH FINCHLEY, N.12
 Tel. : HIL 3735

BUSSELL & Son Ltd.

Funeral Directors

6 WOODHOUSE ROAD
 North Finchley, N.12
 HILLSIDE 1651

623 HIGH ROAD
 North Finchley, N.12
 HILLSIDE 1651

123 HIGH ROAD,
 East Finchley, N.2
 TUDor 1812

**Funerals conducted to and
 from all parts**

Private Chapel of rest

Horticultural Hints

At this time of the year the proper use of fertiliser is most important if one is to obtain the best possible results and therefore it is essential to know the correct treatment for individual plants. For example, certain plants such as Rhododendrons, Azaleas and Lupins like acid conditions. Therefore they should receive a good top dressing with peat. Lime must never be given to these subjects. On the other hand, carnations like lime and they benefit considerably from a top dressing of air-slaked lime. The above examples will emphasize how important it is to use the correct fertiliser and if there is any doubt always refer to a gardening book.

More generally we all know that there is really no substitute for well rotted stable manure, but as it is not always easy to obtain it may be necessary to find alternatives.

One should always have a big compost heap made up of all green garden refuse. Well rotted oak leaves also provide excellent humus for the soil which should be a priority consideration especially in districts where there is so much clay.

Most plants and vegetables benefit from bonemeal forked into the soil during the spring. It is reasonably slow acting and will provide a good basis for a season's growth. Moreover it is a natural fertiliser. To accelerate plant development during the growing season chemical fertilisers are now used extensively, but care must be taken in regard to type and quantity. A useful general fertiliser can be made up as follows: Superphosphate of lime 4 parts, Sulphate of ammonia 2 parts, Sulphate of potash 1 part.

By "WOODSIDE."

Woodside Park Townswomen's Guild

LUNCHEON TO CELEBRATE 21st BIRTHDAY

The splendid Luncheon held on 19th April, 1961, was very different in all ways from the inaugural meeting in 1940, which was held under enemy fire. Over 120 members including 19 Founders, were present in the beautifully decorated hall at the Clubhouse. During the speeches special mention was made by Mrs. Swan of the late Miss Ivy Hughes, whose enthusiasm was largely instrumental in forming the Guild. There was a very real sense of friendship amongst those present, many of whom had travelled long distances in order to be with us. One of whom said "I feel like a wanderer returned, and have spent many happy hours in this hall and in a true Townswomen's Guild sense I have returned home." This feeling of "coming home" to Woodside Park was expressed by several of the members who had left the district during the past twenty years.

North London's Leading Store

When requiring

*FASHIONS—CHILDREN'S WEAR—FURNITURE—
FURNISHING—HARDWARE OR CHINA*

We would suggest a visit to see our comprehensive ranges

It is always our endeavour to give
QUALITY, VALUE AND SERVICE



TELEPHONE

HILLside 3366

TALLY HO, NORTH FINCHLEY, N.12.

SELLING or BUYING a HOUSE?

Consult Your Local Estate Agent on All Property Matters

BUYERS ALWAYS WAITING

All Classes of Mortgage and Insurance Business Effected

BENNETT & HALL

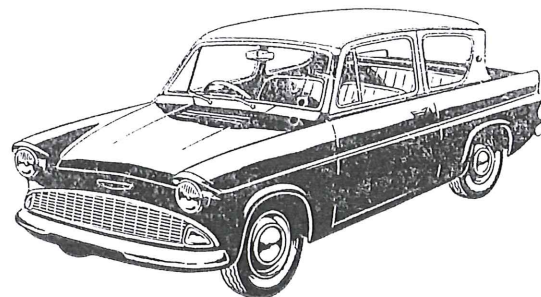
Incorporated Auctioneers—Estate Agents—Surveyors & Valuers

14a SUSSEX RING,
WOODSIDE PARK,
FINCHLEY, N.12
'phone HIL 6387 (3 lines)

5 LONG LANE, CHURCH
END, FINCHLEY, N.3
'phone FIN 2208 (3 lines)

A

ANGLIA

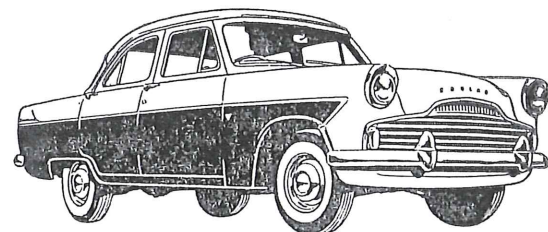


What's the Ford of your Choice? The Popular, the world's best motoring value! The Zephyr, 'the luxury car at a reasonable cost? The Consul? The Prefect?

From Anglias to Zodiacs: we have all the Ford range.

PERRY'S
OF FINCHLEY

MAIN **FORD** DEALERS



ZODIAC

Call in at our showrooms and see for yourself! The address is W. Harold Perry Ltd., 279 Ballards Lane, (Nr. Tally Ho), N, Finchley, N.12 HIL. 8888

Z

USEFUL TELEPHONE NUMBERS AND ADDRESSES

Fire and emergency calls	999
Police Station, Ballards Lane, N.3.	...	FIN.	1113	
Finchley Memorial Hospital	FIN.	1195
Barnet General Hospital	BAR.	7421
Local chemist	HIL.	3815
Cinemas: Gaumont, North Finchley	...	HIL.	3377	
Gaumont, Hendon	HEN.	7137
Lido, Golders Green	SPE.	6161
Odeon, North Finchley	...	HIL.	1698	
Odeon, The Quadrant	...	SUN.	3538	
Odeon, Temple Fortune	...	SPE.	9741	
Rex, East Finchley	...	TUD.	2233	
Golders Green Hippodrome	SPE.	0022
Colne Valley Water Co., Watford	WA.2	3333
Eastern Electricity Board, Brent Street, N.W.4	SUN.	0111
North Thames Gas Board, N.3	FIN.	2600
Hendon Library	HEN.	8282 Ext. 115
Home Helps—Area Health Office, Town Hall, N.W.4	HEN.	8282
Ministry of Labour & National Service, 316a Regent's Park Road, N.3	FIN.	6216
Ministry of Pensions & National Insurance, 10 Finchley Lane, N.W.4	SUN.	0091
National Assistance Board, 10 Finchley Lane, N.W.4	SUN.	0091
H.M. Inspector of Taxes, Grand Arcade, N.12	HIL.	6651
Motor Registration & Licensing, 84 Uxbridge Road, W.13	EAL.	7755
H.M. Customs & Excise, 320a Regent's Park, N.3	FIN.	2083
P.D.S.A., 640 High Road, N.12	HIL.	8093
R.S.P.C.A. (Inspector), 101 Cumbrian Gardens, N.W.2	SPE.	1412