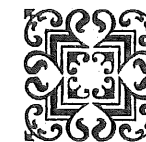


# NEWS AND VIEWS OF WOODSIDE PARK

---

PRINTED BY COLUMBIA PRINTERS  
12 LAMBS CONDUIT PASSAGE  
HOLBORN - LONDON - W.C.1

---



Vol. V No. 1

Sept./Oct. 1959

# Woodside Park Ratepayers' and Residents' Association

## OFFICERS AND COMMITTEE OF THE ASSOCIATION

### Chairman :

E. W. Soldan, 85, Cissbury Ring South HIL. 3846

### Vice-Chairman :

H. M. Pike, 30, Lullington Garth HIL. 4176

### Treasurer :

W. Robinson, 1, Wolstonbury HIL. 4533

### Secretary :

Mrs. D. B. C. Corbett, 100, Chanctonbury Way HIL. 4864

### COMMITTEE

Mrs. Armes, 14, Wolstonbury HIL. 2214

P. A. Bartlett, 94, Cissbury Ring South HIL. 9358

W. W. R. Bond, 27, Lullington Garth HIL. 8227

D. B. C. Corbett, 100, Chanctonbury Way HIL. 4864

J. W. Corbett, 101, Cissbury Ring South HIL. 7230

D. S. Irving, 50, Walmington Fold HIL. 8317

P. A. Long, 39, Linkside FIN. 7311

W. G. Manning, 36, Cissbury Ring North HIL. 4776

Mrs. Monnington, 24, Linkside FIN. 3988

A. Purdon, 60, Cissbury Ring South HIL. 7181

### EDITORIAL COMMITTEE

E. W. Soldan      H. M. Pike      J. W. Corbett

# NEWS and VIEWS

Official Magazine of the  
Woodside Park Ratepayers' & Residents' Association

Volume 5, No. 1

September-October, 1959

## Editorial

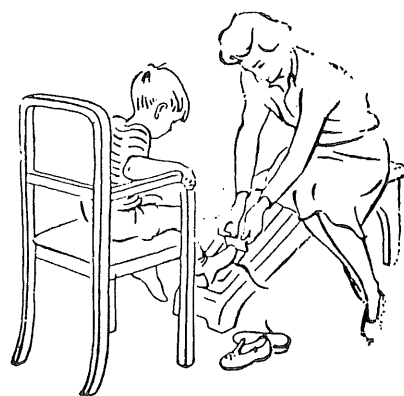
Well, here it is, ladies and gentlemen—the Bulletin with the new look! Now called News and Views of Woodside Park. We think you will agree that this is a great improvement and are proud of the fact that we are still the only ratepayers' association in Hendon to publish their own magazine. It has meant a great deal of hard work, most of which has fallen on the Editorial Committee who have had to re-design and obtain new advertisers. We extend our thanks to all those who made this new issue possible.

This new project is, of course, far more costly and with printing costs rising owing to the recent wages award, we have indeed been fortunate to cover the cost of production. This has only been done by the energetic work of the Editorial Committee in obtaining sufficient advertisers. You can imagine the hard work entailed particularly as we insist as far as possible that no trade is duplicated. When you consider that the subscription to the Association is only 1/-d. per member annually and you receive this magazine free of charge, we do hope that the efforts of the

Editorial Committee have been appreciated and will not be wasted and that you will read this and future issues and support the Association by coming to the Annual General Meeting, notice of which is given on Page 3.

We take this opportunity of welcoming new advertisers and thanking the regular ones for their continued support without which we would not be able to produce this magazine. As a reciprocal gesture we have pleasure in drawing the attention of our readers to their announcements.

May we remind you that this magazine is a means of expressing your views as to whether you think your Committee is doing a good job or not. Why not let us know your feelings regarding the erection of pylons on the fields at Lullington Garth? What do you consider should be done with Frith Manor House? All these items have been reported in your Bulletin, so why not let us know whether you support our decisions or not? A list of committee members is printed in every issue and they would be only too pleased to hear from you. E.W.S.



**Clarks**

MULTIFITTING SHOES  
for Children

are correctly fitted for length, width  
and girth on Clarks footgauge as  
demonstrated on Television.

WE ALSO HAVE A LARGE STOCK OF

**Clarks** LADIES' SHOES

**Finchley Shoe Stores**

831, HIGH ROAD, NORTH FINCHLEY  
HILL 3361 GOOD SHOE REPAIRS

Buses 125, 645 and 609 pass the door

**E. H. PAINE LTD.**

TALLY HO! CORNER, NORTH FINCHLEY

FOR

**MEN'S & BOYS' WEAR**

at 341, Ballards Lane HIL 3946

**GIRLS' WEAR**

at 378, Ballards Lane, HIL 9243

*School Outfitting a Speciality*

Bus Route No. 125 passes both shops

## ANNUAL GENERAL MEETING

THE ANNUAL GENERAL MEETING of the Association will be held on FRIDAY, 25th SEPTEMBER, 1959, at FRITH MANOR SCHOOL, at 8.0 p.m., and I am asked to express the hope that you will be able to be present.

Mrs. D. B. C. CORBETT,

Hon. Secretary.

### AGENDA

The Notice convening the Meeting will be accepted as read.

1. MINUTES of Annual General Meeting held on 26th September, 1958.
2. Treasurer's Report and election of two Auditors.
3. Chairman's Report.
4. Election of Officers.
5. Election of Committee.  
(N.B. The Constitution provides for the election of Chairman, Vice-Chairman, Honorary Treasurer, Honorary Secretary and TEN members of the Committee. The retiring Officers and Committee are eligible for re-election and nominations for these or for new members willing to serve should be submitted to the Honorary Secretary not later than Saturday, the 19th September, 1959).
6. ANY OTHER BUSINESS.

We are pleased to announce that Mr. L. R. Hyde, Public Health Inspector, will speak on the subject of the Clean Air Act.

## W. R. HARVEY & CO.

### TOOLS

For all trades, workshop and garden.

### CUTLERY

Table and desert knives etc. Scissors and pocket knives. All noted brands stocked.

### IRONMONGERY

We carry large stocks for your selection. It pays to study quality.

**Tally-Ho Corner, North Finchley, N.12**

Telephones: HILLside 3454  
HILLside 8714

## THAMES VALLEY

### SCHOOL OF MOTORING

R.A.C. Registered  
Instructors M.S.A.  
Appointed School

**303 Ballards Lane, N.12**

(50 yards from Tally-Ho  
Corner - Below "Celia's"  
Ladies Hairdressers)

**HIL 9509**

## BRAND'S

**Meat & Fish Pastes  
A.1. Sauce**

*Delicious to Taste  
Superb in Quality*

★

**BRAND'S  
Cream of Chicken  
Soup**

**BRAND'S  
Chicken in Jelly**

are very special delicacies

## No Parking Notices, Sussex Ring

The following letter was received from the Town Clerk in answer to our letter published in the last Bulletin regarding NO PARKING notices at Sussex Ring.

Town Hall,  
Hendon, N.W.4.  
10th July, 1959.

Dear Sir,

JUNCTION OF LULLINGTON GARTH, WALMINGTON  
FOLD AND CHANCTONBURY WAY, N.12.

With reference to your letter of the 6th May, 1959, the Highways Committee of the Council gave further consideration at their last meeting to the conditions at the above mentioned junction in the light of the views expressed by your Association and the Mill Hill and District Chamber of Commerce after the meeting which was held at Woodside Park on the 15th April last. After full consideration the Committee recommended to the Council at its meeting on Monday evening that no further action should be taken in the matter. The Council have adopted this recommendation and have instructed me to inform you accordingly.

Yours faithfully,

R. H. WILLIAMS,  
Town Clerk.

★

## Lucky Thirteenth?

Friday, the 13th November will, they hope, be a lucky day for one of our local dramatic societies, the St. Barnabas company, when they present the well known thriller DIAL "M" FOR MURDER on that and the following evening at the Church Hall. It is, incidentally, their 13th production!

They have vacancies for members of all ages and any interested reader should write to the Secretary at 7, Deepdene, Torrington Park, N.12. The support given in the past to this capable company is greatly appreciated and they hope to see you again in November.

H.M.P.

## THE TORRINGTON ARMS

WHITBREAD BEERS

HIGH ROAD - NORTH FINCHLEY

Prop. A. W. Bartlett

HIL. 2419

A first class luncheon served at reasonable price

Monday to Saturday

Snacks always available

*Musical entertainment Friday to Sunday*

Lounge Bar available for hire on Mondays, Wednesdays,  
and Thursdays for your Private parties

**D. C. JEFFERY**

*Electrical Engineer*

*and*

*Contractor*

**47 HUTTON GROVE**

**FINCHLEY, N.12**

Telephode : HILside 7312

**FINCHLEY**

**COACHES**

Phone HILLSIDE 5251

LUXURY TRAVEL

FOR

ALL OCCASIONS

**661, High Road, N.12**

## Frith Manor School

Congratulations to the girls of Frith Manor School who once again carried off the Alderman Maughan Trophy at the Hendon Sports in competition with 34 other schools. This is the 6th year in succession that this Trophy has been won by our local school and we hope that this will not be the last.

In passing we would mention that this school celebrates its 21st anniversary in January next and no doubt this will be celebrated in some suitable manner. Full details will be sent you by the Parent Teachers' Association and if possible published in the next issue of our Bulletin.

E.W.S.



## Electricity Pylons

As mentioned in a previous Bulletin, the Middlesex County Council are securing the services of a Consulting Engineer to give evidence at any local enquiry which may result from the Electricity Board's desire to erect overhead transmission lines from Elstree to Finchley via the Folly Brook Valley. Hendon Council will be sharing the cost of this consultant with the County Council and other local authorities.

The Central Electricity Board have applied for permission to establish a 275/132 kV Sub-Station on land between Burtonhole Lane and Partingdale Lane at present occupied by the War Department. Such a sub-station would be required in the event of a transmission line being either overhead or underground. Hendon Council have refused this application as "an unwarranted intrusion into the Green Belt and unduly disruptive of the scenic value of the Totteridge Valley," but this refusal will naturally be challenged if the transmission lines are subsequently permitted by the Minister.

Those who have seen the effect of Pylons and Sub-Stations on a similar piece of country between Letchmore Heath and Bushey will be profoundly thankful that our Council are taking a strong line on this matter, backed up by our own Association and others of a similar nature in Mill Hill and Totteridge. Unfortunately the fight is not yet won and there is much work to be done if our protests are to be successful.

L.D.E.

## News in Brief

### PAYMENT OF GENERAL AND WATER RATES

A recent suggestion from C.O.R.A.H. was that the general and water rates could be included in one demand issued by the Council. The Borough Treasurer's Department has now stated that there are a number of practical difficulties to be overcome if such a scheme were to be implemented. The idea, however, is to be passed on to the Water Companies for their views.

### POLICE CALL BOX—SUSSEX RING

One of the many pieces of furniture adorning the north west corner of Sussex Ring has been removed. We are informed by Scotland Yard that the Police Call Box is now virtually obsolete, at least, as far as the general public is concerned. For emergency calls one will find more efficient results dialling 999 from a G.P.O. call box than 'phoning from a Police Call Box which only connects the caller with the local Police Station. As there are two G.P.O. boxes at this point the authorities feel that the Police Box could be removed and the policeman on his beat would have to report from another.

### ROAD SURFACES

The Association has pressed for reconsideration of the Borough Engineer's decision to make no further repair work to the surfaces of Lullington Garth and Cissbury Ring South. We are glad to say

that at the time of writing further work has commenced and will, it is hoped, fulfil the wishes of those who had cause to complain.

### NEW HOUSES IN LULLINGTON GARTH

Development permission for the site at the western end of Lullington Garth was granted on the 24th February, 1958, and one feature of this scheme was the planting of a screen of trees. We have awaited the completion of this project with interest so as to ensure that this was, in fact, carried out. The condition imposed that "flowering cherries and double white chestnut shall be planted as standard trees along the northern boundary."

We now understand from the Town Clerk's Department that no attempt has been made to implement this scheme of landscaping as it is not an appropriate time of year for planting. However, the Council are keeping this matter outstanding and will remind the Express Dairy Company who are responsible for the planting.

### SMOKELESS ZONE

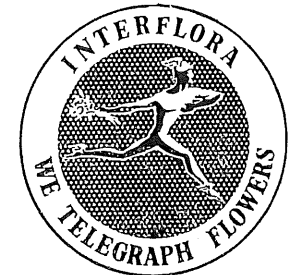
In view of the interest aroused by the Council's plan to make the Borough a smokeless zone, we have invited a public health inspector to explain at the Annual General Meeting how and when the residents of Woodside Park will be affected.

H.M.P.

*Choice Flowers for all Occasions—*

# T. Simmons & Son

Florists :: Nurserymen



**John Innes** Potting Compost, Fertilizers  
and Horticultural Sundries



## 95 Ballards Lane, Finchley, N.3

Nursery at 166 Nether Street, N.3

Telephone FINCHLEY 2245

Phone : FINchley 0469

## FISH AND CHIPS

makes a really satisfying, really nourishing dish. It's all food no waste—superb value.

**A FINE FOOD THAT COSTS LESS**

## P. K. LONG

*Fish Frying Specialists*

301 REGENTS PARK ROAD  
CHURCH END FINCHLEY

The Fried Fish Shop with a Reputation for Cleanliness, Quality,  
Service, and a most attractive Restaurant

# Hendon Borough Council

Meetings of the Hendon Borough Council during the current municipal year will be held on the following Mondays at 6.15 p.m.:

12th October, 1959	21st December, 1959	14th March, 1960
16th November, 1959	8th February, 1960	25th April, 1960

## ORGANISATION AND METHODS

Earlier this year we noticed the Council's intention of setting up an Organisation and Methods section, which, it was estimated, would cost about £6,000 a year for an initial period of five years. With an ever watchful eye on how your money is being spent we protested strongly to the Council through the Conference of Rate-payers of Hendon to which we are affiliated. The Conference suggested that the consultants should be approached on a "remuneration on results achieved basis." This, however, was not acceptable to them for their method of submitting quotations.

A quotation from S. J. Noel Brown and Co. Ltd. for carrying out an O. & M. survey at a fee of £5,750 has been accepted which will begin in the autumn and be completed within seven months.

H.M.P.

## YOUR WARD COUNCILLORS

The three Borough Councillors representing this part of the Borough have been elected to serve upon the following committees for the ensuing municipal year :—

MRS. C. M. THUBRUN	A. P. FLETCHER	D. F. SIMONS
Housing	Buildings & Town Planning	Education
Libraries & Museum	Highways	Allotments
Public Health	Civil Defence	Works
Education	Appeals	Estates
Rating & Valuation		General Purposes
		Civil Defence

# RADIO : TELEVISION

RENT — SALES — SERVICE

**Radio & ELECTRICAL EQUIPMENT Renters Ltd.**

822, HIGH ROAD, N.12

**HIL 3696**

Leading Agents for :

BUSH : PYE : H.M.V. . PHILLIPS : G.E.C.

YOUR LOCAL OFFICE  
FOR  
ALL KINDS of HOLIDAY  
and TOUR

Air, Shipping and Cruises  
British and Continental Rail  
Coach Travel

NO BOOKING FEES

CONSULT

**FRAMES' TOURS**

827 HIGH ROAD, N.12

Tel. HILside 5022/3

*For Modern Hairstyling and  
the Newest Permanent  
Waving methods including  
JAMAL, EUGENE,  
CLYNOL, etc.*

CONSULT

*Celia*

1st FLOOR

303 Ballards Lane, N.12

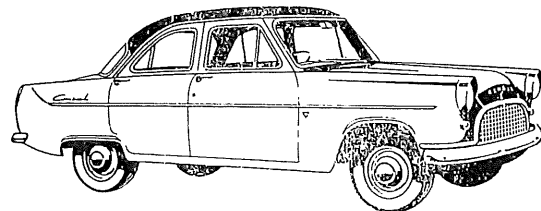
Telephone HILside 7334



## USEFUL TELEPHONE NUMBERS

Police Station—Ballards Lane	...	...	...	FIN. 1113
Local Chemist	...	...	...	HIL. 3815
Cinemas—Gaumont, N. Finchley	...	...	...	HIL. 3377
Gaumont, Hendon	...	...	...	HEN. 7137
Lido, Golders Green	...	...	...	SPE. 6161
Odeon, N. Finchley	...	...	...	HIL. 1698
Odeon, The Quadrant	...	...	...	SUN. 3538
Odeon, Temple Fortune	...	...	...	SPE. 9741
Rex, E. Finchley	...	...	...	TUD. 2233
Colne Valley Water Co., Watford	...	...	...	WAT. 3333
Eastern Electricity Board, Brent Street, N.W.4	...	...	...	SUN. 0111
Finchley Memorial Hospital	...	...	...	FIN. 1195
Hendon Library	...	...	...	HEN. 8282 Ext. 115
North Thames Gas Board, N.3	...	...	...	FIN. 2600
R.S.P.C.A.	...	...	...	SPE. 1412
Golders Green Hippodrome	...	...	...	SPE. 0022

## Torrington Car Hire Service



Weddings - Masonic Dances  
Holiday Trips - London Stations

● WE ARE OPEN 24 HOURS PER DAY

**10 TORRINGTON PARK,**  
North Finchley — London, N.12  
Prop. J. J. NEWMAN Tel. Hillside 9266

Buy your own Lawn Mower from the appointed sales and service agent and obtain the benefit of service after purchase.

Hire Purchase and part exchange facilities.

## THE B. & S. LAWN MOWER CO.

SALES — SERVICE — SPARES

*Appointed Sales and Service Agents for*  
QUALCAST, SUFFOLK, ROTOSCYTHE  
WEBB & GREENS LAWN MOWERS  
and ROTOGARDENER CULTIVATORS

**CHURCHFIELD WAY, CHURCHFIELD AVENUE,  
NORTH FINCHLEY, LONDON N.12**

Telephone : HILLside 4773

— WE COLLECT AND DELIVER —

## THE ARCADE JEWELLERS

Finchley's leading Jewellers for  
Watches, Clocks, Jewellery and  
Plate

*Agents for :*  
Rolex, Jaeger - Le Coultre,  
Longines, Roamer and  
Accurist Watches

Exceptional value in Engagement and  
Wedding Rings  
We Specialize in Gifts for ALL Occasions  
Call and See Our Wide Variety of New  
Gifts

Painless Ear Piercing

THE  
**ARCADE JEWELLERS**

8-9 GRAND ARCADE  
NORTH FINCHLEY, N.12

Tel. : HIL 3735

## BUSSELL & Son Ltd.

**Funeral Directors**

6 WOODHOUSE ROAD  
North Finchley, N.12  
HILLSIDE 1651

632 HIGH ROAD  
North Finchley, N.2  
HILLSIDE 1651

123 HIGH ROAD,  
East Finchley, N.1  
TUDor 1812

Funerals conducted to and  
from all parts

*Private Chapel of rest*



## Horticultural Notes

Gardening can be quite an expensive hobby if all the plants and shrubs which we grow are purchased, but the cost can be considerably reduced if one is prepared to spend a little time in propagating fresh stock from the material in the garden and that which can be begged from neighbours.

Many annuals and bedding plants can be grown from the seed produced by one's own plants. The seed should be allowed to mature on the plants which are then cut down and placed in paper bags which should then be hung up in the garden shed to dry off. During the winter months the seed can be sifted and stored in envelopes indoors, ready for planting in the Spring.

Various shrubs can be grown from both hard and soft wood cuttings. Hard wood cuttings are taken in the Autumn from strong stems which have ripened off. They should be planted about four inches deep in sandy soil which will encourage a fairly good root

system by the following spring. They can then be transplanted into permanent positions. Soft wood cuttings are obtained by removing new green shoots in the Spring and rooting them in flower pots containing John Innes compost.

Dahlias stocks may be increased by both cuttings and the division of tubers. Cuttings should be cut off close to the tuber and rooted as mentioned above. When dividing tubers care should be taken to ensure that each section includes at least one growing shoot.

Chrysanthemums can be reproduced very freely from cuttings, each of which will grow into a full sized plant in the same year.

Many bulbs will produce one or more daughter bulbs and from these stocks can be increased. When gladioli corms are lifted tiny cormels will be noted at the sides which will grow on into corms of flowering size.

"WOODSIDE."

## Not the Right Remedy!

We have been asked to remind our readers of the inconvenience which can be caused by unattended bonfires. Recently a large section of Lullington Garth was blotted out by smoke and while the speed of traffic was temporarily reduced we feel that there must be other ways of improving road safety.

## North London's Leading Store

*When requiring*

*FASHIONS—CHILDREN'S WEAR—FURNITURE—  
FURNISHING—HARDWARE OR CHINA . . . . .*

*We would suggest a visit to see our comprehensive range*

It is always our endeavour to give  
QUALITY, VALUE AND SERVICE



TELEPHONE

HILLside 3366

TALLY HO. NORTH FINCHLEY, N.12.

## SELLING or BUYING a HOUSE?

Consult Your Local Estate Agent on All Property Matters

BUYERS ALWAYS WAITING

All Classes of Mortgage and Insurance Business Effected

## BENNETT & HALL

Incorporated Auctioneers—Estate Agents—Surveyors & Valuers

14a SUSSEX RING,  
WOODSIDE PARK,  
FINCHLEY, N.12  
'phones HIL 6387 (3 lines)



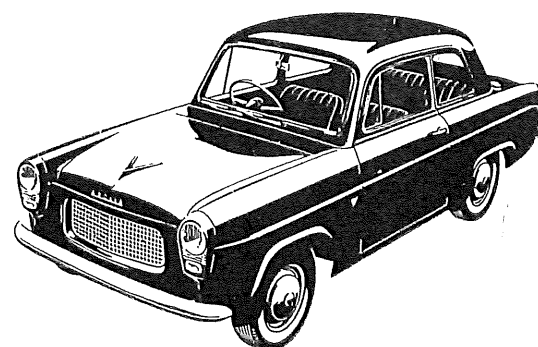
368 BOWES ROAD.  
NEW SOUTHGATE, N.11  
(Adj. Arnos Grove Tube Station).  
'phone ENTERprise 2283

3 & 5 LONG LANE, CHURCH  
END, FINCHLEY, N.3

'phone FIN 2208 (3 lines)

# A

ANGLIA



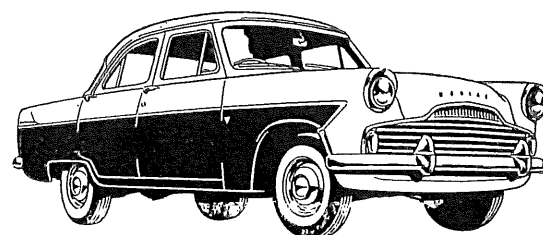
What's the Ford of your Choice? The Popular, the world's best motoring value? The Zephyr, 'the luxury car' at a reasonable cost? The Consul? The Prefect?

From Anglias to Zodiacs: we have all the Ford range.

**PERRY'S**  
OF FINCHLEY

MAIN **FORD** DEALERS

Call in at our showrooms and see for yourself! The address is W. Harold Perry Ltd., 279 Ballards Lane, (Nr Tally Ho), N, Finchley, N.12 HIL. 8888



ZODIAC

# Z