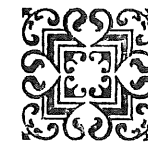


NEWS AND VIEWS OF WOODSIDE PARK

PRINTED BY COLUMBIA PRINTERS
12 LAMBS CONDUIT PASSAGE
HOLBORN - LONDON - W.C.1



Vol. V No. 2

Nov./Dec. 1959

Woodside Park Ratepayers' and Residents' Association

OFFICERS AND COMMITTEE OF THE ASSOCIATION

Chairman :

E. W. Soldan, 85, Cissbury Ring South HIL. 3846

Vice-Chairman :

H. M. Pike, 30, Lullington Garth HIL. 4176

Treasurer :

W. Robinson, 1, Wolstonbury HIL. 4533

Secretary :

L. W. Mears, 107, Chanctonbury Way HIL. 5638

COMMITTEE

Mrs. Armes, 14, Wolstonbury HIL. 2214

W. W. R. Bond, 27, Lullington Garth HIL. 8227

P. N. Campbell, 20, Pycombe Corner HIL. 4599

J. W. Corbett, 101, Cissbury Ring South HIL. 7230

D. S. Irving, 50, Walmington Fold HIL. 8317

P. A. Long, 39, Linkside FIN. 7311

W. G. Manning, 36, Cissbury Ring North HIL. 4776

Mrs. Monnington, 24, Linkside FIN. 3988

A. Purdon, 60, Cissbury Ring South HIL. 7181

Mrs. A. W. Rowe, 32, Chanctonbury Way

EDITORIAL COMMITTEE

E. W. Soldan H. M. Pike J. W. Corbett

NEWS and VIEWS

Official Magazine of the
Woodside Park Ratepayers' & Residents' Association

Volume 5, No. 2

November-December, 1959

Editorial

It was gratifying to see so many of you at the A.G.M., particularly as we had a packed hall the previous Tuesday for the Election meeting. For those of you who preferred Tony Hancock, a full report of the A.G.M. is given in this issue.

One resident seemed to think your Committee had not taken strong enough action on the question of litter left in the streets after dustbins had been emptied. While we have written many letters on this subject to the Council, it would no doubt help our case if individuals also lodged their complaints.

We are pleased to welcome back Mr. L. W. Mears as Secretary of the Association. You are no doubt aware that Mr. Mears was Secretary some two years ago, but had to resign for personal reasons. His pungent letters to the Council certainly brought results and we might even have our refuse collected in the proper manner.

The other two Committee members elected were Mrs. A. B. Rowe and Mr. Peter Campbell. Mrs. Rowe is already active in the Townswomen's Guild and has taken on the following-up of our advertisers in the magazine. Mr. Peter Campbell is an active member of the Parent Teachers Association at Frith Manor. We extend

a welcome to these new members of the Committee. We are pleased to announce that Mrs. Jones of 6 Pyecombe Corner has been appointed collector for the ensuing year and we hope that you will co-operate with her by paying your subscription promptly which remains at 1/- per year for each member.

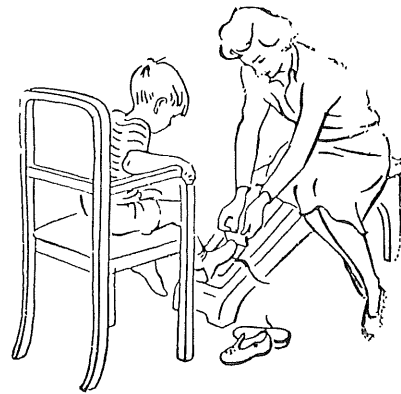
The Xmas tree will be at Sussex Ring this Christmas as usual. Once again we would ask you to leave your gifts which should be non-perishable, such as cigarettes, tea, sugar and any tinned goods, in the bin provided. You may be assured that these things bring great happiness to the old and distressed to whom they are delivered.

Provisional arrangements have been made for the singing of carols at Sussex Ring on Tuesday, the 22nd December. It is hoped that the Salvation Army Band will be present to lead in the singing. You will be notified when definite arrangements have been made.

A history of Frith Manor School appears in this issue, and as you are aware the school is celebrating its 21st anniversary in January.

Responding to a widely expressed wish the Parents Association are appealing for funds to make a gift to the school to mark the occasion.

E.W.S.



Clarks

MULTIFITTING SHOES
for Children

are correctly fitted for length, width
and girth on Clarks footgauge as
demonstrated on Television.

WE ALSO HAVE A LARGE STOCK OF

Clarks

LADIES' SHOES

Finchley Shoe Stores

831, HIGH ROAD, NORTH FINCHLEY
HILL 3361

GOOD SHOE REPAIRS

Buses 125, 645 and 609 pass the door

E. H. PAINE LTD.

TALLY HO! CORNER, NORTH FINCHLEY

FOR

MEN'S & BOYS' WEAR

at 341, Ballards Lane HIL 3945

GIRLS' WEAR

at 378, Ballards Lane, HIL 9243

School Outfitting a Speciality

Bus Route No. 125 passes both shops

Report of the Annual General Meeting

held on Friday, 25th September, 1959

Extra chairs again had to be found for the second evening of the week on which the Association was holding a meeting. The first was of a political nature but the second was the Annual Meeting and it was indeed very gratifying to see so many residents.

Mr. E. W. Soldan, in the chair, welcomed some 160 members and following the Treasurer's report and election of honorary auditors presented his own review of the year's work. Mr. Soldan prefaced his remarks with a word of thanks to his Committee for their work and paid tribute to the retiring Hon. Secretary and two other Committee Members. He went on to relate the Association's close touch with statutory authorities, the local Member of Parliament and Borough Councillors all of whom had been most helpful. Much had been achieved through these contacts and through affiliation with the Conference of Ratepayers Associations of Hendon.

Among the matters which had received attention during the year were: —

The erection of pylons from Elstree — Mill Hill to Finchley which is still in abeyance. The Committee are in touch with the Hendon Borough Council and the Middlesex County Council.

The proposition to the Borough Treasurer that the 2½% cash discount should be given for prompt payment of rates was not acceptable to him. It appears that most people pay their rates promptly and do not need encouragement.

The No Parking notices at Sussex Ring had been a matter which was discussed with the Mill Hill & District Chamber of Commerce, representatives of both sides putting their views to the Council whose ultimate decision was that there should be no change.

Finally, Mr. Soldan said he felt sure that the new magazine **NEWS AND VIEWS OF WOODSIDE PARK** was something to be proud of and he thanked Mr. H. M. Pike, the Vice-Chairman, for the great assistance he had given in its production. He also expressed the hope that members would show their appreciation by giving their support to the Association.

The election of Officers and Committee Members followed, the results of which can be found on the inside of the front cover. Under the 'all-embracing' title of Any Other Business there was much activity from the floor of the hall. Perhaps the most forceful comment came from a resident who raised the question of the speed of coaches along Lullington Garth. Indeed, not only coaches were the offenders and the Association was asked to pursue this matter in the interests of road safety. The incessant chimes of ice cream vendors was again brought to notice but having had this matter on many occasions before, it was pointed out that nothing can be done against the merchants unless they play their 'music' whilst

Continued at foot of page 5

W. R. HARVEY & CO.

TOOLS

For all trades, workshop and garden.

CUTLERY

Table and desert knives etc. Scissors and pocket knives. All noted brands stocked.

IRONMONGERY

We carry large stocks for your selection. It pays to study quality.

Tally-Ho Corner, North Finchley, N.12

Telephones: HILLside 3454
HILLside 8714

THAMES VALLEY

SCHOOL OF MOTORING

R.A.C. Registered
Instructors M.S.A.
Appointed School

303 Ballards Lane, N.12

(50 yards from Tally-Ho
Corner - Below "Celia's"
Ladies Hairdressers)

HIL 9509

BRAND'S

Meat & Fish Pastes

A.1. Sauce

*Delicious to Taste
Superb in Quality*

★

BRANDS'

Cream of Chicken Soup

BRAND'S Chicken in Jelly

are very special delicacies

ACCENT ON YOUTH

by K. C. HARRISON, M.B.E., F.L.A.

Borough Librarian

The accent is very much on youth at the Church Farm House Museum from now until Christmas. Two of the displays currently on show there are the work of the young people of the Borough of Hendon.

In the central room on the ground floor the winning entries in the Children's Art Competition are displayed. The only limitation set on the young artists was that their pictures must depict a scene in Hendon. The paintings and drawings that have resulted are of a very high quality. Many of the subjects chosen show the changes that are being made today in Hendon — new flats building — recently completed schools. Others show some of the older more restful spots in the Borough. All the pictures shown have been purchased for the local history collection.

The other exhibition fills all the rooms on the first floor and is entitled "Hendon Today". Included in it are over 100 photographs taken by boys of the Orange Hill Grammar School Photographic Club. Not only did the boys take the pictures but they processed, enlarged and mounted them. The resulting exhibition is a fascinating study of life in the borough to-day. The boys have covered many aspects — Hendon at work and Hendon at play. There are charming studies of young children of the Sunnyfields Infant School playing and leaving with all the gaiety and seriousness that the very young assume so unselfconsciously. A series of witty candid shots of shoppers in Watling Avenue stands near some delightful scenes in Hendon parks. The stark poetry of a crane rising high over the New Brent Street flats is contrasted with the intricate patterns of the scaffolding below.

If you are interested in how our young people view the borough in which they live, you should not fail to visit these two exhibitions. They will be on show from October 1st to December 31st.

stationary, a state in which they are never to be found. The lopping of overhanging trees, the service provided by the Council's dustmen and the future of the land adjoining Frith Manor School were among other topics voiced by members.

The business side of the meeting completed, the Chairman introduced Mr. L. R. Hyde one of the Hendon Council's Public Health Inspectors. His subject was the Clean Air Act and how and when Woodside Park would become a smokeless zone. The speaker put at rest the minds of residents when he explained at the outset that it might not affect them for as long as five years. The process of converting the Borough into a smokeless zone was then fully detailed and residents advised how they were expected to assist when the time arrived.

H.M.P.

THE TORRINGTON ARMS

WHITBREAD BEERS

HIGH ROAD - NORTH FINCHLEY

Prop. A. W. Bartlett

HIL. 2419

A first class luncheon served at reasonable price

Monday to Saturday

Snacks always available

Musical entertainment Friday to Sunday

Lounge Bar available for hire on Mondays, Wednesdays,
and Thursdays for your Private parties

D. C. JEFFERY

Electrical Engineer

and

Contractor

47 HUTTON GROVE

FINCHLEY, N.12

Telephode : HILLside 7312

FINCHLEY

COACHES

Phone HILLSIDE 5251

LUXURY TRAVEL

FOR

ALL OCCASIONS

661, High Road, N.12

Frith Manor School

Frith Manor School, with its unique lay-out and very modern design, opened for the first time on January 23rd, 1939, a fortnight later than was originally intended.

The school was still not finished and the 116 pupils admitted had to wait several weeks for the use of the hall and the playgrounds.

Having enjoyed the summer holiday the school reassembled on August 29th to find part of the building occupied by troops, and with the outbreak of war it was completely taken over by the Army.

For the children who had not moved away a Home Tuition scheme commenced in October and this continued until sufficient shelter accommodation became available at Dollis School for the children to receive full-time education there. This continued until the following May when the school was returned to the Local Education Authority — it still has evidence of the Army Occupation.

After the war the number of children on roll continually increased to a maximum of nearly 500, necessitating the addition of a hut for two classes.

Over 2,000 children have attended the school and, many of them are now married, having children of their own, and spread all over the world in all walks of life.

The school has had many successes both academically and in the athletic field, and has been visited frequently by educationists both from this country and overseas.

Of the original staff Miss Price, Mr. Lingley and I are still at the school.

J. H. GILES,
Headmaster.

You will no doubt have read the history of Frith Manor School with interest and I do appeal to past and present parents for contributions for the 21st Anniversary so that we can present to the School something which will be handed down from generation to generation. I do hope there will be a generous response and would ask you to send your contributions to Mrs. R. T. M. Dane, 90 Cissbury Ring South, N.12, as soon as possible. Please do not send contributions to the School.

E. W. SOLDAN,
Vice President,
Parent Teachers Association

News in Brief

STATION CAR PARK

Recent works adjoining the northbound platform at Woodside Park Station has resulted in additional space for the parking of cars. We understand that further improvements will be made but not for some considerable time. Residents using their cars daily can now make the journey to the West End of the City without the peril of bumper-to-bumper queues.

THE MAYOR'S APPEAL

In response to the Mayor of Hendon's appeal for the Blind the Association has made a donation of £2 2s. 0d.

GOLDERS GREEN HIPPODROME

This theatre being the only one between the West End and the Provinces, has made headlines in all newspapers recently as it appears to be going the way of so many similar buildings — to the demolition squad. At the time of writing permission to pull it down and replace with a block of offices has not been granted, but the Association has voiced its protest through C.O.R.A.H. and to our Member of Parliament. Judging by the way members reacted at the Annual General Meeting our action appears to have been fully justified.

We now understand that yet another place of entertainment is doomed, the Odeon Cinema, Temple Fortune. Is television really to blame?

H.M.P.

THE GENERAL ELECTION

A hurriedly arranged meeting at the School Hall enabled residents to hear the three Parliamentary Candidates speak. After every house had been advised by circular only 48 hours before the meeting the attendance of something over 400 was encouraging to the Candidates. The result of the voting in Hendon North now known but perhaps forgotten is noted for your record : —

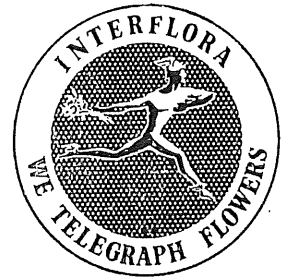
1955	
C. I. Orr-Ewing (Con.)	21,934
Monkhouse (Lab.)	17,874
Barrington-Hudson (Lib.)	3,467
<i>Majority</i>	4,060
1959	
C. I. Orr-Ewing (Con.)	21,889
C. H. Genese (Lab.-Co-op.)	16,566
Lady Hills (Lib.)	4,598
<i>Majority</i>	5,323

Choice Flowers for all Occasions—

T. Simmons & Son

Florists :: Nurserymen

John Innes Potting Compost, Fertilizers
and Horticultural Sundries



95 Ballards Lane, Finchley, N.3

Nursery at 166 Nether Street, N.3

Telephone FINCHLEY 2245

Phone : FINchley 0469

FISH AND CHIPS

makes a really satisfying, really nourishing dish. It's all food no waste—superb value.

A FINE FOOD THAT COSTS LESS

P. K. LONG

Fish Frying Specialists

301 REGENTS PARK ROAD
CHURCH END FINCHLEY

The Fried Fish Shop with a Reputation for Cleanliness, Quality,
Service, and a most attractive Restaurant

"Check that Fall" Campaign

by Dr. J. L. Patton, M.B., Ch.B., D.P.H., Medical Officer of Health
for Hendon

During the coming winter the Royal Society for the Prevention of Accidents proposes to focus attention on the dangers of falls in the home and how to avoid them.

Statistics show that 60% of all fatal home accidents are falls, and that about 5,000 people die every year in Great Britain from this cause. Such accidents are, in theory, preventable, and as they are especially serious in elderly people a few moments' forethought would help us to anticipate and deal with the possible hazards.

Physical defects such as poor vision or deafness sometimes progress insidiously, and it may be necessary to draw the attention of the disabled person to the fact that such a defect may be remedied by medical treatment.

On the other hand, there may exist faults in the environment which can easily be remedied. For example, the home of a person with failing vision can be made safer by better lighting and by the use of contrasting colours, especially in dark corners and on stairs and steps. Older people frequently suffer from giddiness, and in order to prevent falls as a consequence some effort should be made to have cupboards, switches and gas and electric meters placed at a level which obviates stooping or climbing. When such a disability is present, much help can be given by the installation of handrails at appropriate sites.

One of the important features of the Campaign is a simple quiz of 20 questions dealing with potential risks of falls and, at the suggestion of the Hendon Old People's Welfare Committee, during the coming winter members of some old people's clubs will be asked to take part in the exercise and help will be given where possible on the needs shown by their answers to the questions.

Typical questions are:—

Are you free from serious eye trouble?

Have you enough light for safety on the stairs?

Do your shoes fit well?

Is your gas meter within easy reach?

In cases where they signify that they need help — whether it be, for example, from a doctor, chiropodist, mechanic or carpenter — the elderly will be given the information of local sources of assistance.

Falls not only occur from one level to another, but equally dangerous are trips and slips on the same level, sometimes caused by over-polished floors, worn or torn linoleum or carpet, trailing flex, loose tiles or paving stones, loose floorboards or cleaning equipment left lying about.

Look around for likely hazards and if you find one in your home or in the home of an elderly friend or relative do what is possible to remedy it.

RADIO : TELEVISION

RENT — SALES — SERVICE

Radio & ELECTRICAL EQUIPMENT Renters Ltd.

822, HIGH ROAD, N.12

HIL 3696

Leading Agents for :

BUSH : PYE : H.M.V. : PHILLIPS : G.E.C.

YOUR LOCAL OFFICE
FOR
ALL KINDS of HOLIDAY
and TOUR

Air, Shipping and Cruises
British and Continental Rail
Coach Travel

NO BOOKING FEES

CONSULT

FRAMES' TOURS

827 HIGH ROAD, N.12

Tel. HILside 5022/3

*For Modern Hairstyling and
the Newest Permanent
Waving methods including
JAMAL, EUGENE,
CLYNOL, etc.*

CONSULT

Celia

1st FLOOR

303 Ballards Lane, N.12

Telephone HILside 7334

Books for housebound old people

In a Borough as large as Hendon it is obvious that there are many elderly people, often living alone, who through age or infirmity never get out at all.

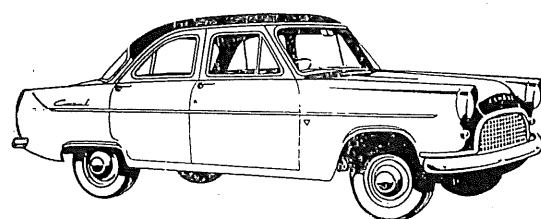
In the majority of cases, relatives, friends or neighbours, are able to change their library books for them, but there are undoubtedly many old folk who are not regularly catered for.

It is these people that the Hendon and District Federation of Townswomen's Guild, through the Hendon Borough Council, wish to help, by visiting them weekly, bringing the sort of book which they enjoy.

Invalided or elderly persons wishing to avail themselves of this offer should get in touch with Committee members, whose name and address will be found on the inside cover of this magazine.

J.W.C.

Torrington Car Hire Service



Weddings - Masonic Dances
Holiday Trips - London Stations

● WE ARE OPEN 24 HOURS PER DAY

10 TORRINGTON PARK,
North Finchley — London, N.12
Prop. J. J. NEWMAN Tel. Hillside 9266

Buy your own Lawn Mower from the appointed sales and service agent and obtain the benefit of service after purchase.

Hire Purchase and part exchange facilities.

THE B. & S. LAWN MOWER CO. SALES — SERVICE — SPARES

Appointed Sales and Service Agents for
QUALCAST, SUFFOLK, ROTOSCYTHE
WEBB & GREENS LAWN MOWERS
and ROTOGARDENER CULTIVATORS

**CHURCHFIELD WAY, CHURCHFIELD AVENUE,
NORTH FINCHLEY, LONDON N.12**

Telephone : Hillside 4773

— WE COLLECT AND DELIVER —

THE ARCADE JEWELLERS

Finchley's leading Jewellers for
Watches, Clocks, Jewellery and
Plate

Agents for :
Rolex, Jaeger - Le Coultre,
Longines, Roamer and
Accurist Watches

Exceptional value in Engagement and
Wedding Rings
We Specialize in Gifts for ALL Occasions
Call and See Our Wide Variety of New
Gifts

Painless Ear Piercing

THE
ARCADE JEWELLERS
8-9 GRAND ARCADE
NORTH FINCHLEY, N.12
Tel. : HIL 3735

BUSSELL & Son Ltd.

Funeral Directors

6 WOODHOUSE ROAD
North Finchley, N.12
HILLSIDE 1651

632 HIGH ROAD
North Finchley, N.12
HILLSIDE 1651

123 HIGH ROAD,
East Finchley, N.2
TUDOR 1812

Funerals conducted to and
from all parts

Private Chapel of rest

Horticultural Hints

I feel sure that amongst our reasonably enthusiastic gardeners, there must be some, who at one time or another have wondered how they could create a garden that to some extent is different from the ordinary. A garden where there are flowers in bloom all the year round. One answer to this problem is a garden in which shrubs predominate and hold pride of place over all other plants. In addition to beautiful and fascinating flowers there are many shrubs which are grown also for the manner in which the foliage changes colour in the Autumn and the resulting display is most attractive. Incidentally both flowers and foliage are ideal for house decoration which is a further asset and by cutting off parts of the shrub for this purpose, a certain amount of automatic pruning is accomplished.

The introduction of shrubs to a

garden will of course necessitate a certain amount of planning and it may call for partial reconstruction in parts of the garden. For example existing narrow borders may have to be widened and possibly entirely new borders made. One must not be afraid of altering the form of a garden if one is to accomplish a different look.

One favourable aspect of shrubs is that once they are planted they do not need continual attention and moreover the labour expended annually in planting out bedding plants is avoided. Furthermore no more plants will need to be purchased.

For those who decide they are interested I would suggest that a visit to Kew Gardens would be amply repaid as they would be able to inspect and take the names of any shrubs which appealed to them.

By "WOODSIDE"

Dear Mr. Soldan,

It has occurred to me that owing to an imperfect understanding of the functions of the National Assistance Board, there may be a number of elderly people in Woodside Park living in more straightened circumstances than is necessary under the Welfare State. In these days the receipt of National Assistance is no more to be considered a 'charity' than to accept a Children's Allowance or The Old Age Pension.

It is possible to own the house in which you live and yet qualify for assistance, because it is not the desire of the Authorities to uproot old people. All sources of income must be divulged. The allowance, if granted, may be drawn at a Post Office where the applicant is not known, should privacy be desired, and it may be reassuring to know that all applications to the National Assistance Board are treated with the utmost discretion and consideration.

Further details can be obtained by asking the Post Office for Forms A.L. 18 and O.1.

Yours sincerely,
ALICE ROWE.

North London's Leading Store

When requiring

FASHIONS—CHILDREN'S WEAR—FURNITURE—
FURNISHING—HARDWARE OR CHINA

We would suggest a visit to see our comprehensive ranges

It is always our endeavour to give
QUALITY, VALUE AND SERVICE



TELEPHONE

HILLside 3366

TALLY HO, NORTH FINCHLEY, N.12.

SELLING or BUYING a HOUSE?

Consult Your Local Estate Agent on All Property Matters

BUYERS ALWAYS WAITING

All Classes of Mortgage and Insurance Business Effected

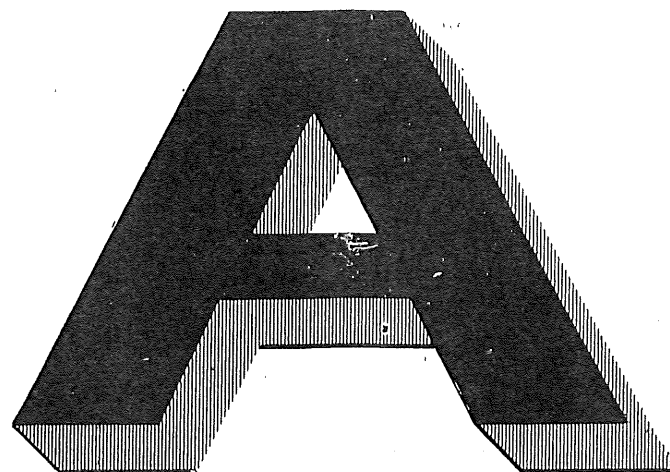
BENNETT & HALL

Incorporated Auctioneers—Estate Agents—Surveyors & Valuers

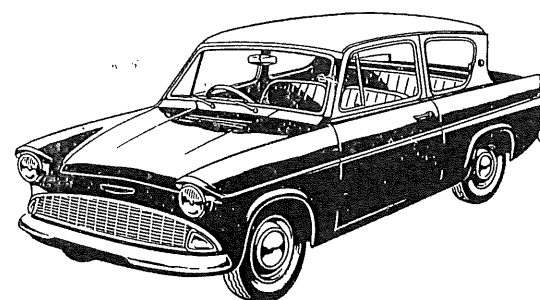
14a SUSSEX RING,
WOODSIDE PARK,
FINCHLEY, N.12
'phones HIL 6387 (3 lines)

368 BOWES ROAD.
NEW SOUTHGATE, N.11
(Adj. Arnos Grove Tube Station).
'phone ENTerprise 2283

3 & 5 LONG LANE, CHURCH
END, FINCHLEY, N.3
'phone FIN 2208 (3 lines)



ANGLIA

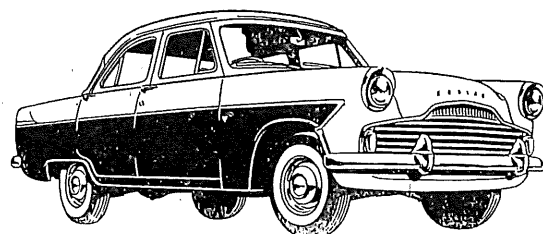


What's the Ford of your Choice? The Popular, the world's best motoring value? The Zephyr, 'the luxury car' at a reasonable cost? The Consul? The Prefect?

From Anglias to Zodiacs: we have all the Ford range.

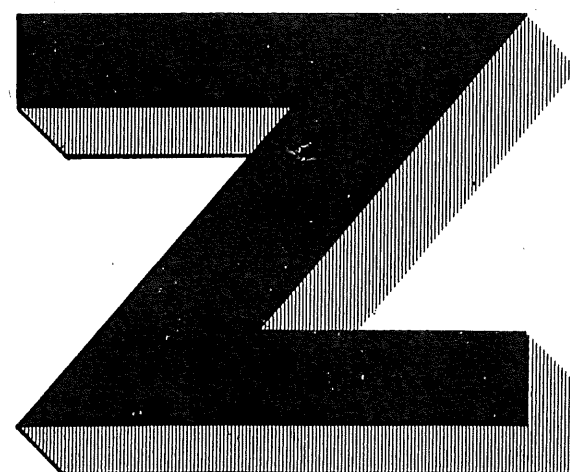
PERRY'S
OF FINCHLEY

MAIN **FORD** DEALERS



ZODIAC

Call in at our showrooms and see for yourself! The address is **W. Harold Perry Ltd., 279 Ballards Lane, (Nr. Tally Ho), N, Finchley, N.12 HIL. 8888**



USEFUL TELEPHONE NUMBERS AND ADDRESSES

Fire and emergency calls	999
Police Station, Ballards Lane, N.3.	...	FIN.	1113	
Finchley Memorial Hospital	FIN.	1195
Barnet General Hospital	BAR.	7421
Local chemist	HIL.	3815
Cinemas: Gaumont, North Finchley	...	HIL.	3371	
Gaumont, Hendon	...	HEN.	7137	
Lido, Golders Green	...	SPE.	6161	
Odeon, North Finchley	...	HIL.	1698	
Odeon, The Quadrant	...	SUN.	3538	
Odeon, Temple Fortune	...	SPE.	9741	
Rex, East Finchley	...	TUD.	2233	
Golders Green Hippodrome	...	SPE.	0022	
Colne Valley Water Co., Watford	...	WAT.	3333	
Eastern Electricity Board, Brent Street, N.W.4	...	SUN.	0111	
North Thames Gas Board, N.3	...	FIN.	2600	
Hendon Library	...	HEN.	8282 Ext. 115	
Home Helps—Area Health Office, Town Hall, N.W.4	...	HEN.	8282	
Ministry of Labour & National Service, 316a Regent's Park Road, N.5	...	FIN.	6216	
Ministry of Pensions & National Insurance, 10 Finchley Lane, N.W.4	...	SUN.	0091	
National Assistance Board, 10 Finchley Lane, N.W.4	...	SUN.	0091	
H.M. Inspector of Taxes, Grand Arcade, N.12	...	HIL.	6651	
Motor Registration & Licensing, 84 Uxbridge Road, W.13	...	EAL.	7755	
H.M. Customs & Excise, 320a Regent's Park, N.3	...	FIN.	2083	
P.D.S.A., 640 High Road, N.12	...	HIL.	8903	
R.S.P.C.A. (Inspector), 101 Cumbrian Gardens, N.W.2	...	SPE.	1412	